

RJS1050-K 680W STICHSÄGE GB2

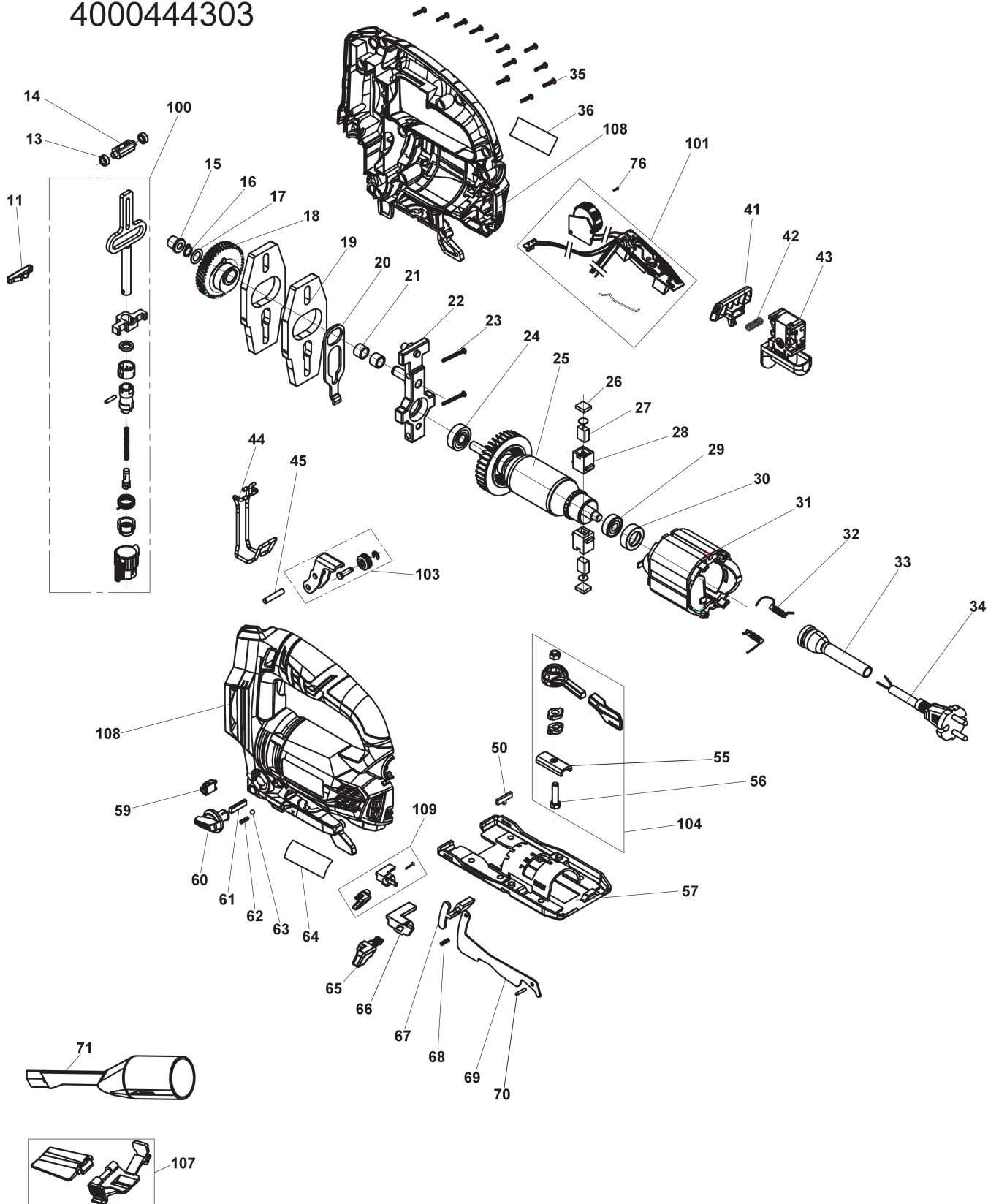
5133002220 - RJS1050G - 4000444303





4000444302

4000444303



| Position | Quantity | Description | Part number | EAN |
|----------|----------|----------------------|-------------------------------|---------------|
| 011 1 | 1 | GLEITPLATTE | 5131032094 | 4058546131920 |
| 013 2 | 2 | DICHTBUECHSE | 5131032095 | 4058546131937 |
| 014 3 | 1 | ANSCHLAG | 5131032096 | 4058546131944 |
| 015 4 | 1 | GETRIEBEHUELSE | 5131032097 | 4058546131951 |
| 016 5 | 1 | SPRENGRING | 5131032098 | 4058546131968 |
| 017 6 | 1 | SCHEIBE | 5131032099 | 4058546131975 |
| 018 7 | 1 | ZAHNRAD | 5131032100 | 4058546131982 |
| 019 8 | 2 | GEW.AUSGLEICHER | 5131032101 | 4058546131999 |
| 020 9 | 1 | ANTRIEB | 5131032102 | 4058546132002 |
| 021 10 | 2 | NADELLAGER | 5131032103 | 4058546132019 |
| 022 11 | 1 | LAGERBRUECKE | 5131032104 | 4058546132026 |
| 023 12 | 2 | SCHRAUBE | 5131032105 | 4058546132033 |
| 024 13 | 1 | KUGELLAGER | 5131032106 | 4058546132040 |
| 025 14 | 1 | ANKER KOMPLETT | Item discontinued(5131032107) | |
| 026 15 | 2 | BUERSTENABDECKUNG | 5131032108 | 4058546132064 |
| 027 16 | 2 | KOHLEBUERSTE | 5131032109 | 4058546132071 |
| 028 17 | 2 | KOHLEHALTER | 5131032110 | 4058546132088 |
| 029 18 | 1 | KUGELLAGER | 5131032111 | 4058546132095 |
| 030 19 | 1 | LAGERBUECHSE | 5131032112 | 4058546132101 |
| 031 20 | 1 | FELD F. ELEKTROMOTOR | 5131032113 | 4058546132118 |
| 032 21 | 2 | DROSSEL | 5131032114 | 4058546132125 |
| 033 22 | 1 | KNICKSCHUTZ | 5131032115 | 4058546132132 |
| 034 23 | 1 | ANSCHLUSSLEITUNG | 5131032145 | 4058546132422 |
| 035 24 | 12 | SCHRAUBE | 5131032117 | 4058546132156 |
| 036 25 | 1 | ETIKETT | Item discontinued(5131032141) | |
| 041 26 | 1 | ARRETIERSTIFT | 5131032120 | 4058546132170 |
| 042 27 | 1 | FEDER | 5131032121 | 4058546132187 |
| 043 28 | 1 | SCHALTER | 5131032122 | 4058546132194 |
| 044 29 | 1 | STANGE | 5131032123 | 4058546132200 |
| 045 30 | 1 | STIFT | 5131032124 | 4058546132217 |
| 050 31 | 1 | AUFLAGEPLATTE | 5131032126 | 4058546132231 |
| 055 32 | 1 | ABSTUETZBLECH | 5131032206 | 4058546133009 |
| 056 33 | 1 | SCHRAUBE | 5131032207 | 4058546133016 |
| 057 34 | 1 | GRUNDPLATTE | 5131032128 | 4058546132255 |
| 059 35 | 1 | LINSE-POLSTER | 5131032129 | 4058546132262 |
| 060 36 | 1 | KNOPF | 5131032130 | 4058546132279 |
| 061 37 | 1 | SPINDEL | 5131032131 | 4058546132286 |
| 062 38 | 1 | FEDER | 5131032132 | 4058546132293 |
| 063 39 | 1 | KUGEL | 5131032133 | 4058546132309 |
| 064 40 | 1 | ETIKETT | 5131032140 | 4058546132378 |
| 065 41 | 1 | DRUECKER | Item discontinued(5131032134) | |
| 066 42 | 1 | ARM | Item discontinued(5131032135) | |
| 067 43 | 1 | KNOPF | 5131032136 | 4058546132330 |
| 068 44 | 1 | FEDER | 5131032137 | 4058546132347 |
| 069 45 | 1 | BLECHRICHTER | 5131032138 | 4058546132354 |
| 070 46 | 1 | STIFT | 5131032139 | 4058546132361 |
| 071 47 | 1 | STAUBFUEHRUNG | 5131032143 | 4058546132408 |
| 076 48 | 1 | SCHRAUBE | 5131032142 | 4058546132392 |
| 100 49 | 1 | AUFNAHME | 5131032093 | 4058546131913 |
| 101 50 | 1 | ELEKTRONIK-PLATINE | 5131032119 | 4058546132163 |

| Position | Quantity | Description | Part number | EAN |
|----------|----------|-------------------|-------------------------------|---------------|
| 103 51 | 1 | FUEHRUNGSROLLE | 5131032125 | 4058546132224 |
| 104 52 | 1 | BETAETIGUNGSHEBEL | 5131032127 | 4058546132248 |
| 107 53 | 1 | FUEHRUNG | 5131032144 | 4058546132415 |
| 108 54 | 1 | MOTORGEHAEUSE | Item discontinued(5131032118) | |
| 109 55 | 1 | STAUBSCHUTZ | 5131040775 | 4058546060398 |