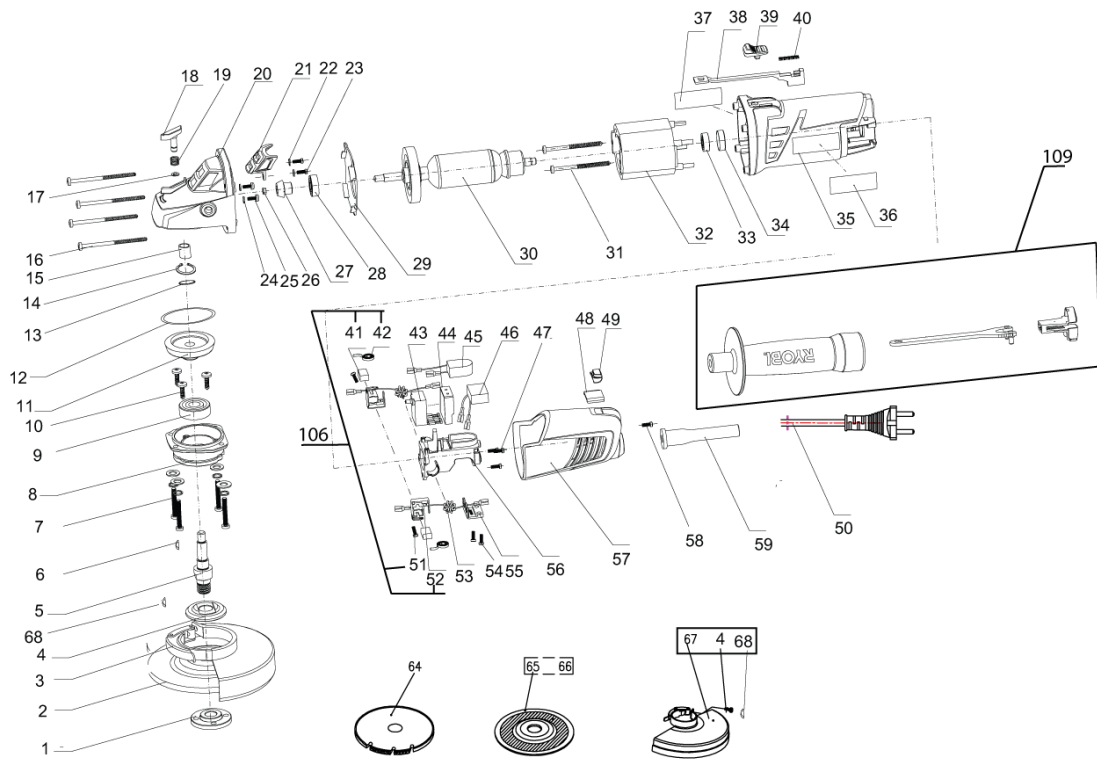


EAG950RB Winkelschleifer

5133000548 - EAG950RB - 4000444327





| Position | Quantity | Description | Part number | EAN |
|----------|----------|--------------------|-------------------------------|---------------|
| 0001 1 | 1 | SPANNFLANSCH | 5131033254 | 4002395160655 |
| 0003 2 | 1 | SCHUTZ | 5131033071 | 4002395156436 |
| 0004 3 | 1 | SPANNFLANSCH | Item discontinued(5131033255) | |
| 0005 4 | 1 | SCHAFT | 5131033135 | 4002395151080 |
| 0006 5 | 1 | SCHLUESSEL | 5131033134 | 4002395151073 |
| 0007 6 | 4 | SCHRAUBE | Item discontinued(5131033133) | |
| 0008 7 | 1 | GETRIEBEDECKEL | Item discontinued(5131033136) | |
| 0009 8 | 1 | KUGELLAGER | Item discontinued(5131033137) | |
| 0010 9 | 3 | SCHRAUBE | Item discontinued(5131033138) | |
| 0011 10 | 1 | SCHAFT | 5131033139 | 4002395151721 |
| 0012 11 | 1 | O-RING | Item discontinued(5131033140) | |
| 0013 12 | 1 | SCHEIBE | Item discontinued(5131033141) | |
| 0014 13 | 1 | SPRENGRING | Item discontinued(5131033142) | |
| 0015 14 | 1 | NADELLAGER | Item discontinued(5131033144) | |
| 0016 15 | 4 | SCHRAUBE | Item discontinued(5131033143) | |
| 0017 16 | 1 | RING | Item discontinued(5131033147) | |
| 0018 17 | 1 | KNOPF | Item discontinued(5131033145) | |
| 0019 18 | 1 | FEDER | Item discontinued(5131033146) | |
| 0020 19 | 1 | GETRIEBE | Item discontinued(5131033148) | |
| 0021 20 | 1 | SCHUTZHAUBENDECKEL | Item discontinued(5131033151) | |
| 0023 21 | 2 | SCHRAUBE | Item discontinued(5131033152) | |
| 0025 22 | 2 | SCHRAUBE | Item discontinued(5131033155) | |
| 0026 23 | 1 | MUTTER | Item discontinued(5131033154) | |
| 0027 24 | 1 | SCHAFT | Item discontinued(5131033149) | |
| 0028 25 | 1 | KUGELLAGER | 5131033150 | 4002395152438 |
| 0029 26 | 1 | VENTILATORGEHAEUSE | Item discontinued(5131033156) | |
| 0030 27 | 1 | ROTOR | Item discontinued(5131033157) | |
| 0031 28 | 2 | SCHRAUBE | Item discontinued(5131033153) | |
| 0032 29 | 1 | STATOR | Item discontinued(5131033159) | |
| 0033 30 | 1 | KUGELLAGER | 5131033158 | 4002395153114 |
| 0034 31 | 1 | LAGERBUECHSE | Item discontinued(5131033160) | |
| 0035 32 | 1 | GEHAEUSE | Item discontinued(5131033169) | |
| 0036 33 | 1 | ETIKETT | Item discontinued(5131033122) | |
| 0037 34 | 1 | LEISTUNGSSCHILD | Item discontinued(5131033184) | |
| 0038 35 | 1 | SCHALTHEBEL | 5131033163 | 4002395153169 |
| 0039 36 | 1 | SCHALTERDRUECKER | 5131033162 | 4002395153152 |
| 0040 37 | 1 | FEDER | Item discontinued(5131033161) | |
| 0041 38 | 2 | KOHLEBUERSTE | 5131033165 | 4002395153183 |
| 0042 39 | 2 | FEDER | Item discontinued(5131033168) | |
| 0043 40 | 1 | SCHALTER | Item discontinued(5131033170) | |
| 0044 41 | 1 | AUFNAHME | Item discontinued(5131033174) | |
| 0045 42 | 1 | LEITERPLATTE | Item discontinued(5131033171) | |
| 0046 43 | 1 | KONDENSATOR | Item discontinued(5131033172) | |
| 0047 44 | 3 | SCHRAUBE | Item discontinued(5131033176) | |
| 0048 45 | 1 | ABSTUETZBLECH | Item discontinued(5131033179) | |
| 0049 46 | 1 | ANZEIGER | Item discontinued(5131033178) | |
| 0050 47 | 1 | ANSCHLUSSLEITUNG | Item discontinued(5131033125) | |
| 0051 48 | 2 | SCHRAUBE | Item discontinued(5131033167) | |
| 0052 49 | 2 | BUERSTENHALTER | Item discontinued(5131033166) | |
| 0053 50 | 2 | DROSSEL | Item discontinued(5131033173) | |

| Position | Quantity | Description | Part number | EAN |
|----------|----------|---------------------|-------------------------------|---------------|
| 0056 51 | 1 | SCHALTERDRUECKER | Item discontinued(5131033175) | |
| 0057 52 | 1 | GEHAEUSEDECKEL | Item discontinued(5131033177) | |
| 0058 53 | 1 | SCHRAUBE | Item discontinued(5131033180) | |
| 0059 54 | 1 | KNICKSCHUTZ | Item discontinued(5131033181) | |
| 0061 55 | 1 | STIRNLOCHSCHLUESSEL | Item discontinued(5131033183) | |
| 0068 56 | 1 | RING | Item discontinued(5131033132) | |
| 0106 57 | 2 | KOHLEBUERSTEN-SET | 5131033164 | 4002395153176 |
| 0109 58 | 1 | HANDGRIFF-SET | Item discontinued(5131033182) | |