

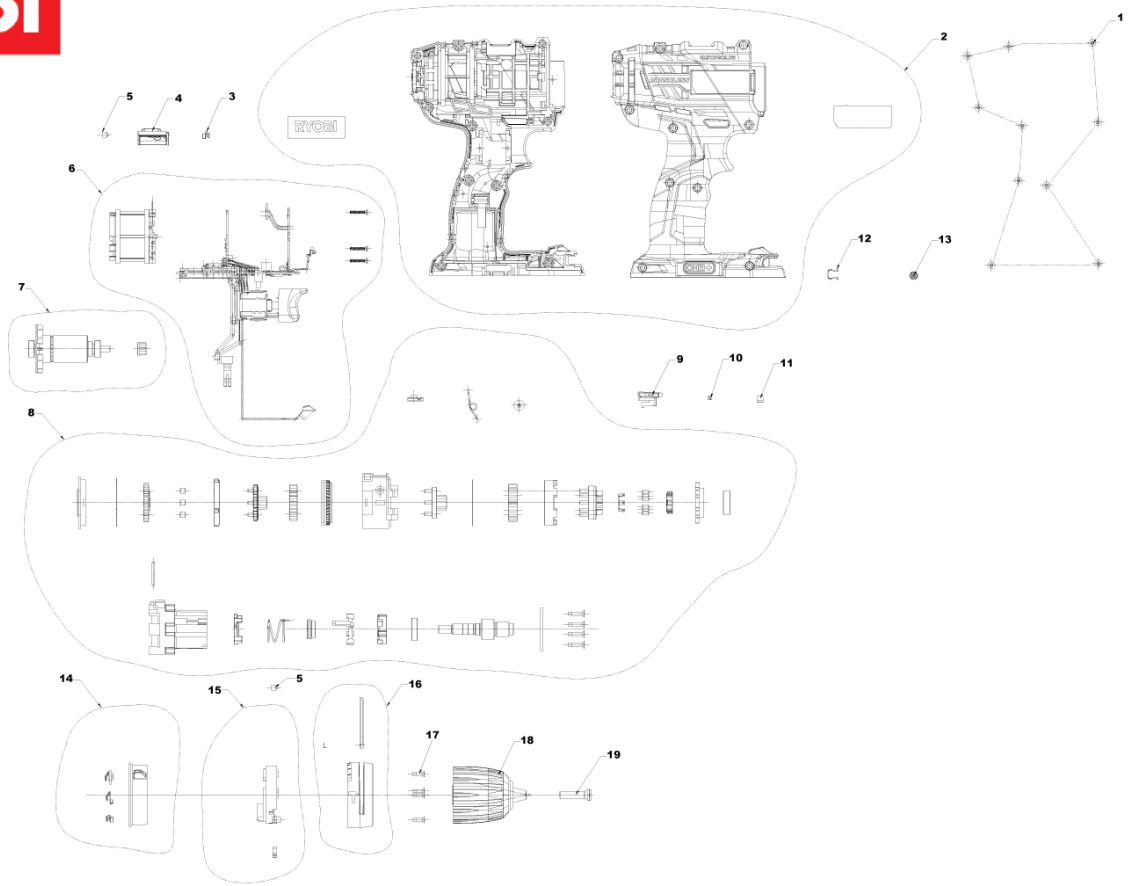
R18PDBL-LL52S Schlagbohrschr IN2

5133002871 - R18PDBL-LL52S - 4000444496



RYOBI

4000444496



| Position | Quantity | Description | Part number | EAN |
|----------|----------|----------------------------|-------------------------------|---------------|
| 001 1 | 10 | SCHRAUBE | 5131011359 | 4058546168315 |
| 002 2 | 1 | GEHAEUSE | Item discontinued(5131033424) | |
| 003 3 | 1 | KONTAKT | 5131033408 | 4002395162857 |
| 004 4 | 1 | KNOPF | 5131033409 | 4002395162864 |
| 005 5 | 2 | ENTLASTUNGSK. | 5131033410 | 4002395162871 |
| 006 6 | 1 | MOTOREINHEIT | Item discontinued(5131033411) | |
| 007 7 | 1 | MOTOR | 5131033412 | 4002395162895 |
| 008 8 | 1 | GETRIEBEKASTEN | 5131041260 | 4058546065249 |
| 009 9 | 1 | KNOPF | Item discontinued(5131033414) | |
| 010 10 | 1 | DISTANZSTUECK | 5131033415 | 4002395163526 |
| 011 11 | 1 | ETIKETT | 5131033416 | 4002395163533 |
| 012 12 | 1 | BIT-HALTER | 5131031687 | 4058546193171 |
| 014 13 | 1 | HALTER | 5131033426 | 4002395164233 |
| 015 14 | 1 | KUPPLUNGSGEHAEUSE | 5131033427 | 4002395164240 |
| 016 15 | 1 | KUPPLUNG | 5131033428 | 4002395164257 |
| 017 16 | 5 | SCHRAUBE | 5131033422 | 4002395163595 |
| 018 17 | 1 | BOHRFUTTER | 5131033423 | 4002395164202 |
| 019 18 | 1 | SCHRAUBE | Item discontinued(5131033455) | |
| 013 19 | 1 | DOUBLE BIT (PH2 S6 L=50MM) | Item discontinued(5132001236) | |