

RBV3000CESV LAUBSAUGER roStyle GB2

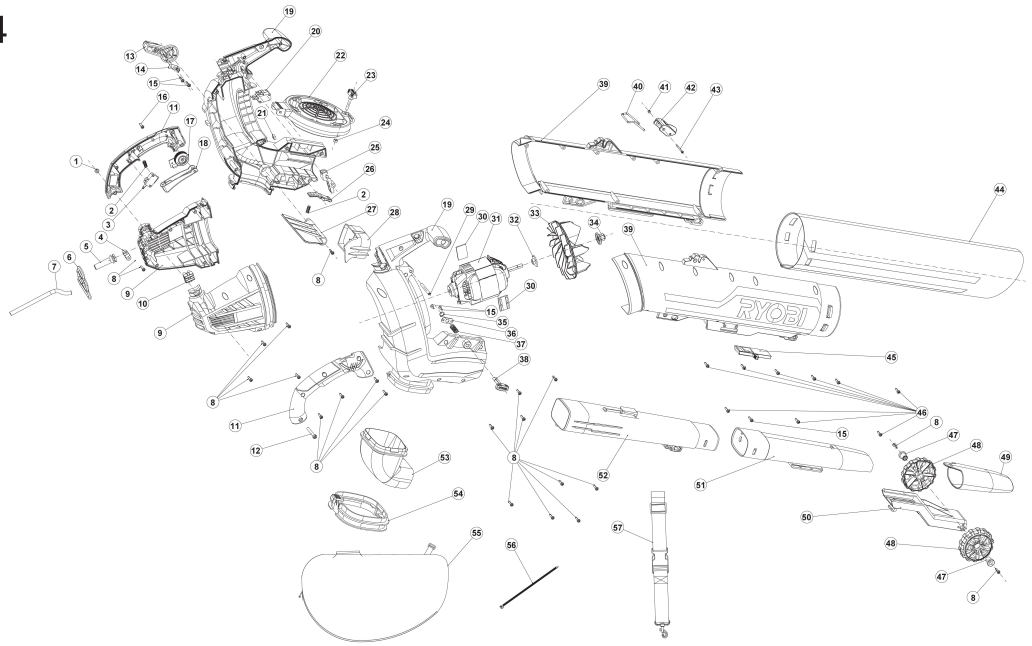
5133002191 - RBV3000CESV - 4000444674





4000444673

4000444674



| Position | Quantity | Description | Part number | EAN |
|----------|----------|-----------------------------|-------------------------------|---------------|
| 1001 1 | 1 | MUTTER | Item discontinued(5131036164) | |
| 1002 2 | 3 | FEDER | Item discontinued(5131036115) | |
| 1003 3 | 1 | UMSCHALTER | 5131036114 | 4058546154936 |
| 1004 4 | 1 | KLEMME | Item discontinued(5131036118) | |
| 1005 5 | 1 | LEITUNG | Item discontinued(5131036112) | |
| 1006 6 | 1 | KABELSCHUTZSCHLAUCH | Item discontinued(5131036111) | |
| 1007 7 | 1 | LEITUNG | Item discontinued(5131036110) | |
| 1008 8 | 32 | SCHRAUBE | 5131036107 | 4058546154875 |
| 1009 9 | 1 | GEHAEUSE | Item discontinued(5131036122) | |
| 1010 10 | 1 | VERBINDUNGSLEITUNG | 5131036119 | 4058546154981 |
| 1011 11 | 1 | HANDGRIFF | Item discontinued(5131036108) | |
| 1012 12 | 1 | SCHRAUBE | Item discontinued(5131036163) | |
| 1013 13 | 1 | KNOPF | 5131036128 | 4058546155070 |
| 1014 14 | 1 | FEDER | Item discontinued(5131036129) | |
| 1015 15 | 5 | SCHRAUBE | 5131036130 | 4058546155094 |
| 1016 16 | 1 | SCHRAUBE | Item discontinued(5131036117) | |
| 1017 17 | 1 | LEITUNG | 5131036113 | 4058546154929 |
| 1018 18 | 1 | KNOPF | Item discontinued(5131036116) | |
| 1019 19 | 1 | GEHAEUSE | Item discontinued(5131036131) | |
| 1020 20 | 2 | UMSCHALTER | 5131036121 | 4058546155001 |
| 1021 21 | 1 | MUTTER | Item discontinued(5131036127) | |
| 1022 22 | 1 | DECKEL | 5131036124 | 4058546155032 |
| 1023 23 | 1 | KNOPF | Item discontinued(5131036125) | |
| 1024 24 | 1 | MUTTER | Item discontinued(5131036126) | |
| 1025 25 | 1 | DRUECKER | 5131036120 | 4058546154998 |
| 1026 26 | 1 | VERSCHLUSS | 5131036133 | 4058546155117 |
| 1027 27 | 1 | ABWEISER | Item discontinued(5131036132) | |
| 1028 28 | 1 | AUSSTOSSER f. Laubhaecksler | 5131036147 | 4058546155247 |
| 1029 29 | 1 | FEDER | Item discontinued(5131036123) | |
| 1030 30 | 2 | MOOSGUMMI | Item discontinued(5131036156) | |
| 1031 31 | 1 | MOTOR | 5131036157 | 4058546155346 |
| 1032 32 | 1 | DICHTUNG | 5131036158 | 4058546155353 |
| 1033 33 | 1 | VENTILATOR | 5131036159 | 4058546155360 |
| 1034 34 | 1 | MUTTER | 5131036161 | 4058546155384 |
| 1035 35 | 1 | FEDERKLEMME | 5131036154 | 4058546155315 |
| 1036 36 | 1 | PLATTE f. Laubhaecksler | Item discontinued(5131036155) | |
| 1037 37 | 1 | FEDER | Item discontinued(5131036153) | |
| 1038 38 | 1 | KNOPF | Item discontinued(5131036152) | |
| 1039 39 | 1 | Rohr fuer Laubhaecksler | Item discontinued(5131036138) | |
| 1040 40 | 1 | VERSCHLUSS | 5131036134 | 4058546155124 |
| 1041 41 | 1 | MUTTER | Item discontinued(5131036136) | |
| 1042 42 | 1 | VERSCHLUSS | 5131036137 | 4058546155155 |
| 1043 43 | 1 | SCHRAUBE | Item discontinued(5131036135) | |
| 1044 44 | 1 | ROHR fuer Laubhaecksler | 5131036139 | 4058546155162 |
| 1045 45 | 1 | KNOPF | Item discontinued(5131036162) | |
| 1046 46 | 10 | SCHRAUBE | 5131036140 | 4058546155179 |
| 1047 47 | 2 | RADLAGERBUCHSE | 5131036141 | 4058546155186 |
| 1048 48 | 2 | RAD | 5131036142 | 4058546155193 |
| 1049 49 | 1 | DUESENABDECKUNG | Item discontinued(5131036144) | |
| 1050 50 | 1 | ROLLENHALTER | Item discontinued(5131036143) | |

| Position | Quantity | Description | Part number | EAN |
|----------|----------|--------------------------------|-------------------------------|---------------|
| 1051 51 | 1 | ROHR f. Laubhaecksler | 5131036145 | 4058546155223 |
| 1052 52 | 1 | ROHR f. Laubhaecksler | 5131036146 | 4058546155230 |
| 1053 53 | 1 | VERSCHRAUBUNG f. Laubhaecksler | 5131036148 | 4058546155254 |
| 1054 54 | 1 | ADAPTER f. Laubhaecksler | 5131036149 | 4058546155261 |
| 1055 55 | 1 | Laubfangsack | 5131036150 | 4058546155278 |
| 1056 56 | 1 | FEDERKLEMME | Item discontinued(5131036151) | |
| 1057 57 | 1 | TRAGSCHLAUFE | 5131036165 | 4058546155421 |