

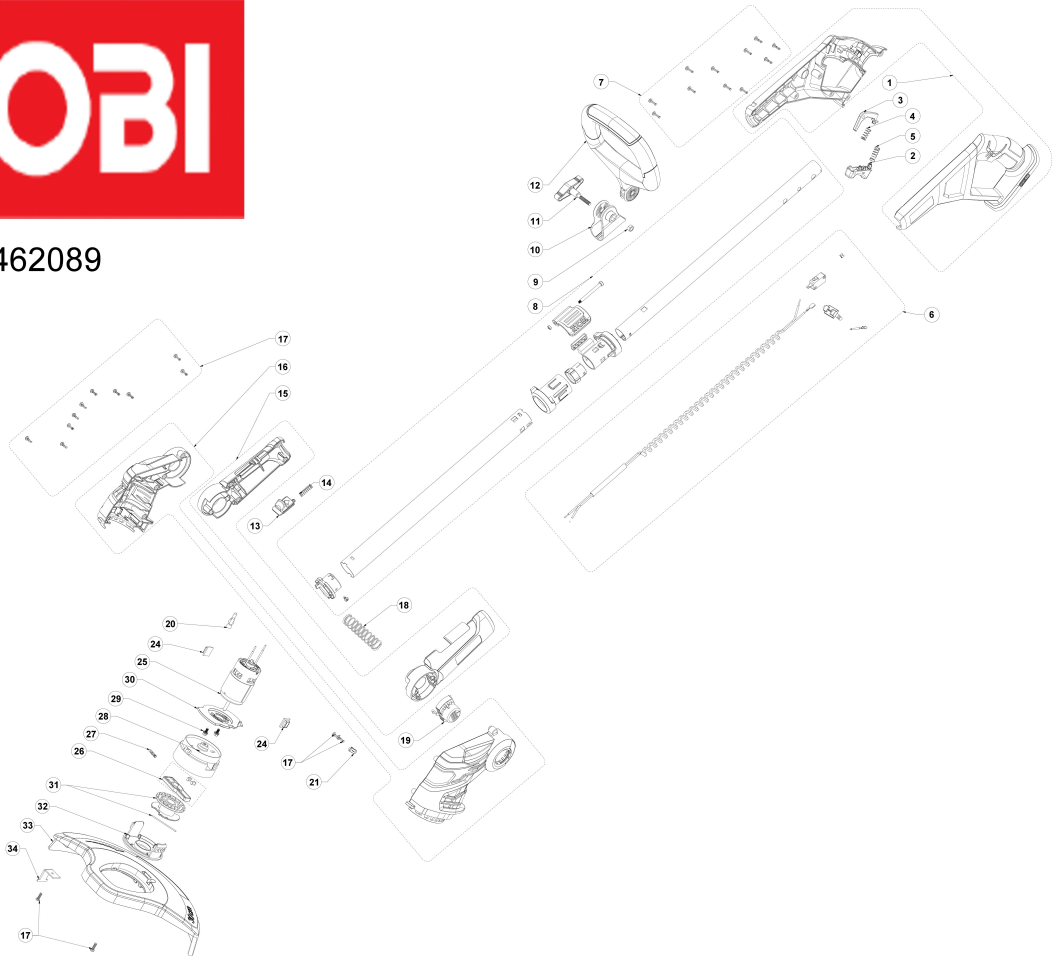
# RLT183222S AKKU-RASENTRIMMER IN2

5133004429 - RLT183222S - 4000462089





4000462089



| Position | Quantity | Description                            | Part number                   | EAN           |
|----------|----------|--|-------------------------------|---------------|
| 1001 1   | 1        | HANDGRIFF                              | 5131035458                    | 4058546148805 |
| 1002 2   | 1        | DRUECKER                               | 5131035455                    | 4058546148775 |
| 1003 3   | 1        | VERSCHLUSS                             | 5131035456                    | 4058546148782 |
| 1004 4   | 1        | FEDER                                  | 5131035454                    | 4058546148768 |
| 1005 5   | 1        | FEDER                                  | 5131035457                    | 4058546148799 |
| 1006 6   | 1        | ELEKTRONIK                             | 5131039553                    | 4058546044114 |
| 1007 7   | 11       | SCHRAUBE                               | Item discontinued(5131011407) |               |
| 1008 8   | 1        | FUEHRUNGSROHR                          | 5131039541                    | 4058546043995 |
| 1009 9   | 1        | MUTTER                                 | 5131035639                    | 4058546150457 |
| 1010 10  | 1        | BEFESTIGUNGSTEIL                       | 5131039542                    | 4058546044008 |
| 1011 11  | 1        | DREHKNOPF                              | Item discontinued(5131036321) |               |
| 1012 12  | 1        | ZUSATZHANDGRIFF                        | 5131036322                    | 4058546156923 |
| 1013 13  | 1        | DRUECKER                               | Item discontinued(5131039543) |               |
| 1014 14  | 1        | FEDER                                  | 5131039552                    | 4058546044107 |
| 1015 15  | 1        | GEHAEUSE                               | 5131039544                    | 4058546044022 |
| 1016 16  | 1        | MOTORGEHAEUSE                          | 5131041977                    | 4058546251918 |
| 1017 17  | 14       | SCHRAUBE                               | 5131034734                    | 4058546143275 |
| 1018 18  | 1        | FEDER                                  | 5131035115                    | 4058546146191 |
| 1019 19  | 1        | KNOPF                                  | Item discontinued(5131035116) |               |
| 1020 20  | 2        | ANSCHLUSS                              | 5131035584                    | 4058546149932 |
| 1021 21  | 1        | KLEMME                                 | Item discontinued(5131035569) |               |
| 1024 22  | 2        | GUMMIPLATTE                            | 5131035568                    | 4058546149772 |
| 1025 23  | 1        | DC MOTOR                               | 5131039554                    | 4058546044121 |
| 1026 24  | 1        | PLATTE                                 | 5131035566                    | 4058546149758 |
| 1027 25  | 1        | FEDER                                  | 5131034745                    | 4058546143381 |
| 1028 26  | 1        | GEHAEUSE                               | 5131197855                    | 4002395139705 |
| 1029 27  | 2        | Schraube                               | 5131035447                    | 4058546148690 |
| 1030 28  | 1        | TRAEGER                                | 5131039555                    | 4058546044138 |
| 1031 29  | 1        | FADENSPULE                             | Item discontinued(5131020241) |               |
| 1032 30  | 1        | DECKEL                                 | 5131034743                    | 4058546143367 |
| 1033 31  | 1        | SCHUTZ                                 | 5131039550                    | 4058546044084 |
| 1034 32  | 1        | KLINGE                                 | 5131197850                    | 4002395139651 |
| 33       | 1        | RAC1392 Schneidmesser fuer Hybr LT XXX | Item discontinued(5132003565) |               |