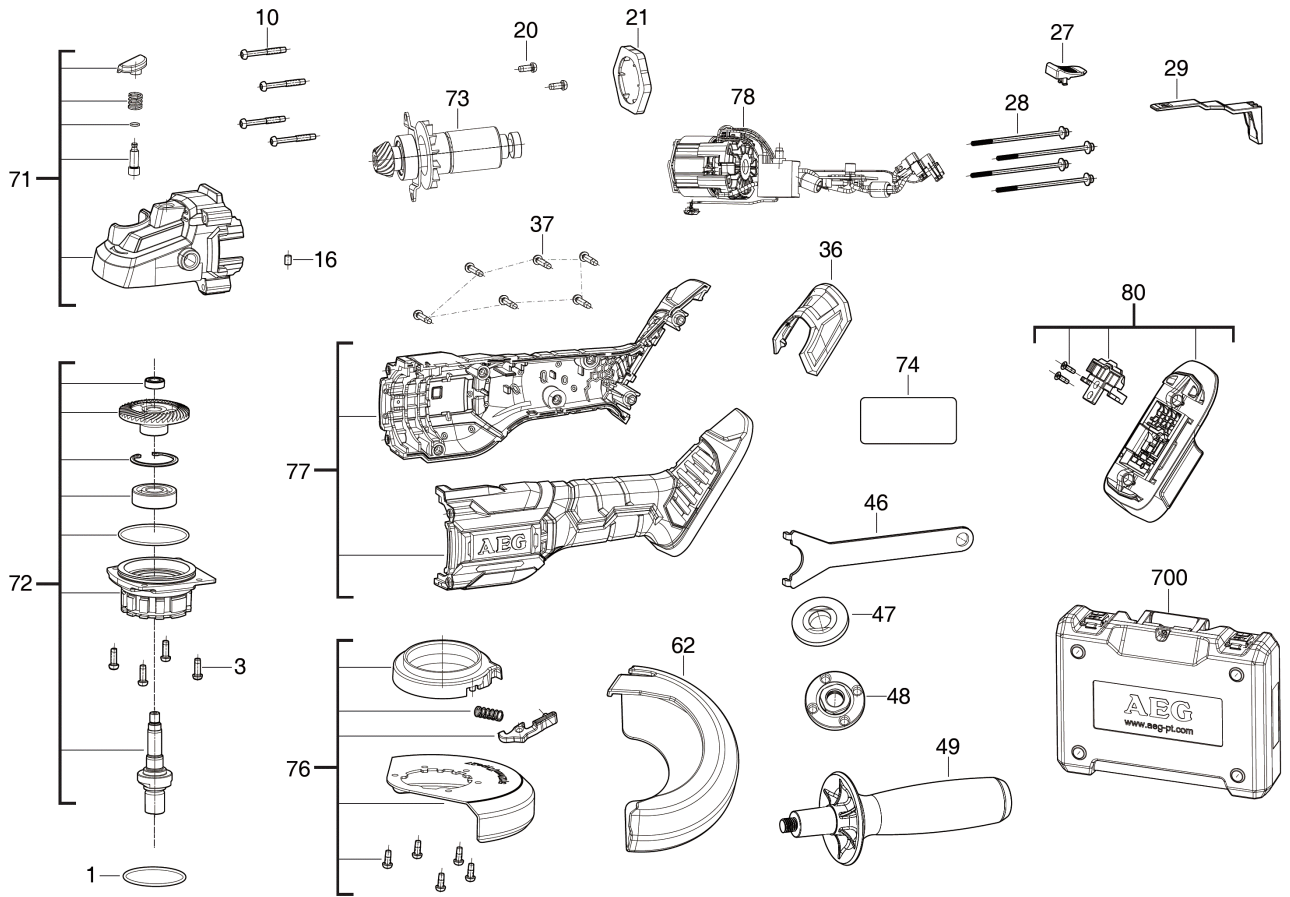


BEWS18-125BLLI-502C AK.WI.SCHLEIFER IN2

4935464417 - BEWS18-125BLLI-502C - 4000469040





| Position | Quantity | Description | Part number | EAN |
|----------|----------|---------------------|-------------|---------------|
| 0001 1 | 1 | O-RING | 4931466481 | 4058546276980 |
| 0003 2 | 4 | SCHRAUBE | 4931466482 | 4058546276997 |
| 0010 3 | 4 | SCHRAUBE | 4931448858 | 4002395179275 |
| 0016 4 | 1 | PUFFER | 4931466483 | 4058546277000 |
| 0020 5 | 2 | SCHRAUBE | 660165015 | 4002395849826 |
| 0021 6 | 1 | ABSTANDSHALTER | 4931465130 | 4058546232306 |
| 0027 7 | 1 | SCHALTERDRUECKER | 4931461894 | 4058546229948 |
| 0028 8 | 4 | SCHRAUBE | 4931466484 | 4058546277017 |
| 0029 9 | 1 | SCHALTSCHIEBER | 4931461895 | 4058546229955 |
| 0036 10 | 1 | STAUBKAPPE | 4931466485 | 4058546277024 |
| 0037 11 | 6 | SCHRAUBE | 4931461357 | 4058546035297 |
| 0046 12 | 1 | SCHRAUBENSCHLUESSEL | 4931466486 | 4058546277031 |
| 0047 13 | 1 | FLANSCHMUTTER | 4931466487 | 4058546277048 |
| 0048 14 | 1 | FLANSCHMUTTER | 4931466488 | 4058546277055 |
| 0049 15 | 1 | ZUSATZHANDGRIFF | 4931466489 | 4058546277062 |
| 0062 16 | 1 | SCHUTZ | 4931466526 | 4058546277437 |
| 0071 17 | 1 | GETRIEBEKASTEN | 4931466490 | 4058546277079 |
| 0072 18 | 1 | GETRIEBEKASTEN | 4931466491 | 4058546277086 |
| 0073 19 | 1 | MOTOREINHEIT | 4931466492 | 4058546277093 |
| 0074 20 | 1 | LEISTUNGSSCHILD | 4931466499 | 4058546277161 |
| 0076 21 | 1 | SCHUTZ | 4931466500 | 4058546277178 |
| 0077 22 | 1 | GEHAEUSE | 4931466495 | 4058546277123 |
| 0078 23 | 1 | ELEKTRONIK | 4931466496 | 4058546277130 |
| 0080 24 | 1 | ANSCHLUSSKLEMME | 4931466498 | 4058546277154 |
| 0700 25 | 1 | TRANSPORTKOFFER | 4931466610 | 4058546278274 |