

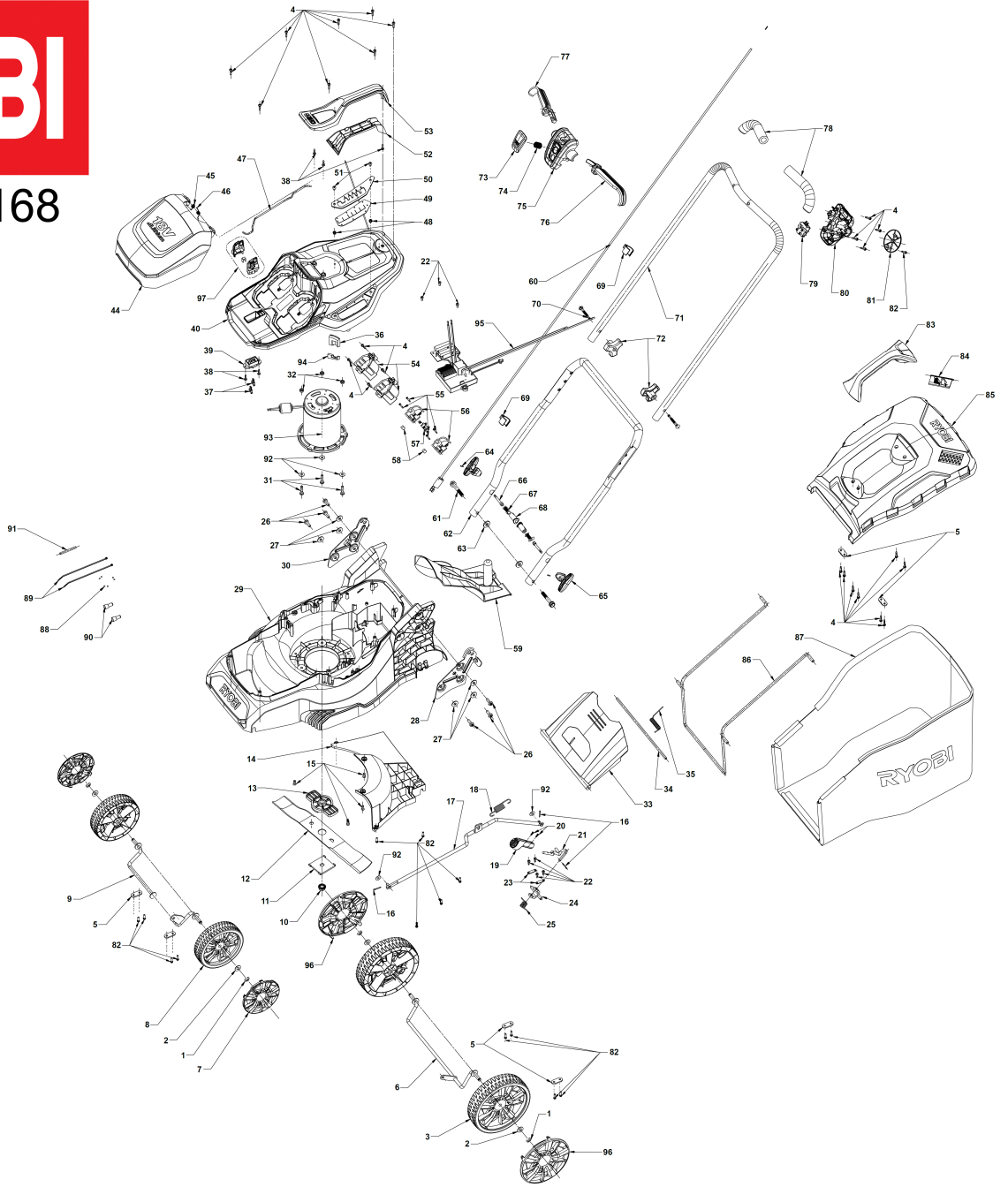
RY18LM37A-240 AKKU-RASENMAEHER IN2

5133004798 - RY18LM37A-240 - 4000475168





4000475168



| Position | Quantity | Description | Part number | EAN |
|----------|----------|---------------------|-------------|---------------|
| 1001 1 | 1 | PART NOT DETAILED | 1000063920 | |
| 1002 2 | 4 | SCHEIBE | 5131035664 | 4058546056483 |
| 1003 3 | 2 | RAD | 5131042803 | 4058546260170 |
| 1004 4 | 24 | SCHRAUBE | 5131035603 | 4058546150105 |
| 1005 5 | 1 | PART NOT DETAILED | 1000063920 | |
| 1006 6 | 1 | ACHSE | 5131042804 | 4058546260187 |
| 1007 7 | 2 | ABDECKUNG | 5131042805 | 4058546260194 |
| 1008 8 | 2 | RAD | 5131042806 | 4058546260200 |
| 1009 9 | 1 | ACHSE | 5131042807 | 4058546260217 |
| 1010 10 | 1 | MUTTER | 5131035663 | 4058546150686 |
| 1011 11 | 1 | HALTER | 5131036303 | 4058546156749 |
| 1013 12 | 1 | PRAEZISIONSHILFE | 5131036302 | 4058546156732 |
| 1014 13 | 1 | ABWEISER | 5131042808 | 4058546260224 |
| 1015 14 | 1 | PART NOT DETAILED | 1000063920 | |
| 1016 15 | 3 | STIFT | 5131035642 | 4058546150488 |
| 1017 16 | 1 | VERBINDUNGSSTUECK | 5131042809 | 4058546260231 |
| 1018 17 | 1 | FEDER | 5131042810 | 4058546260248 |
| 1019 18 | 1 | GRIFF | 5131042811 | 4058546260255 |
| 1020 19 | 2 | SCHRAUBE | 5131035668 | 4058546150723 |
| 1021 20 | 1 | EINSTELLBUEGEL | 5131042812 | 4058546260262 |
| 1022 21 | 7 | SCHRAUBE | 5131035593 | 4058546150013 |
| 1023 22 | 2 | BEFESTIGUNGSTEIL | 5131042813 | 4058546260279 |
| 1024 23 | 1 | TRAEGER | 5131042814 | 4058546260286 |
| 1025 24 | 1 | FEDER | 5131042815 | 4058546260293 |
| 1026 25 | 6 | SCHRAUBE | 5131040191 | 4058546052539 |
| 1027 26 | 6 | SCHEIBE | 5131040192 | 4058546052546 |
| 1028 27 | 1 | HALTEBUEGEL | 5131042817 | 4058546260316 |
| 1029 28 | 1 | PART NOT DETAILED | 1000063920 | |
| 1030 29 | 1 | HALTEBUEGEL | 5131042819 | 4058546260330 |
| 1031 30 | 3 | SCHRAUBE | 5131035657 | 4058546150624 |
| 1032 31 | 3 | MUTTER | 5131035639 | 4058546150457 |
| 1033 32 | 1 | TUER | 5131042823 | 4058546260378 |
| 1034 33 | 1 | HALTESTANGE | 5131042824 | 4058546260385 |
| 1035 34 | 1 | FEDER | 5131042825 | 4058546260392 |
| 1036 35 | 1 | GUMMIBUECHSE | 5131042826 | 4058546260408 |
| 1037 36 | 2 | VERBINDUNGSLEITUNG | 5131035637 | 4058546150433 |
| 1038 37 | 5 | SCHRAUBE | 5131044609 | 4058546383329 |
| 1039 38 | 1 | TRAEGER | 5131035636 | 4058546150426 |
| 1040 39 | 1 | GEHAEUSE | 5131042827 | 4058546260415 |
| 1044 40 | 1 | SERVICEDECKEL | 5131043027 | 4058546262419 |
| 1045 41 | 1 | FEDER | 5131042829 | 4058546260439 |
| 1046 42 | 1 | FEDER | 5131042830 | 4058546260446 |
| 1047 43 | 1 | LEITUNG | 5131042831 | 4058546260453 |
| 1048 44 | 2 | MUTTER | 5131011814 | 4058546098957 |
| 1049 45 | 1 | GUMMIPLATTE | 5131042832 | 4058546260460 |
| 1050 46 | 1 | EINSTELLVORRICHTUNG | 5131042833 | 4058546260477 |
| 1051 47 | 1 | PART NOT DETAILED | 1000063920 | |
| 1052 48 | 1 | BEFESTIGUNGSTEIL | 5131042834 | 4058546260484 |
| 1053 49 | 1 | HALTEGRIFF | 5131042835 | 4058546260491 |
| 1054 50 | 2 | BATTERIEGEHAEUSE | 5131042836 | 4058546260507 |

| Position | Quantity | Description | Part number | EAN |
|----------|----------|-----------------------------|-------------------------------|---------------|
| 1055 51 | 1 | PART NOT DETAILED | 1000063920 | |
| 1056 52 | 2 | AUFNAHMESCHAFT | 5131043031 | 4058546262457 |
| 1057 53 | 1 | KONTAKT | 5131035714 | 4058546151171 |
| 1058 54 | 2 | GUMMIPUFFER | 5131036300 | 4058546156718 |
| 1059 55 | 1 | MULCHADAPTER | 5131042838 | 4058546260521 |
| 1060 56 | 1 | LEITUNG | 5131042839 | 4058546260538 |
| 1061 57 | 1 | PART NOT DETAILED | 1000063920 | |
| 1062 58 | 2 | HANDGRIFF | 5131042840 | 4058546260545 |
| 1063 59 | 2 | SCHEIBE | 5131040216 | 4058546052782 |
| 1064 60 | 2 | STIFT | 5131040245 | 4058546053079 |
| 1065 61 | 2 | DREHKNOPF | 5131033551 | 4002395149131 |
| 1066 62 | 2 | STIFT | 5131042841 | 4058546260552 |
| 1067 63 | 2 | FEDER | 5131033550 | 4002395149124 |
| 1068 64 | 2 | HUELSE | 5131042842 | 4058546260569 |
| 1069 65 | 2 | KABELHAKEN | 5131042843 | 4058546260576 |
| 1070 66 | 2 | SCHRAUBE | 5131042844 | 4058546260583 |
| 1071 67 | 1 | GRIFF | 5131042845 | 4058546260590 |
| 1072 68 | 2 | FLUEGELSCHRAUBE | 5131042846 | 4058546260606 |
| 1073 69 | 1 | DRUECKER | 5131042256 | 4058546254704 |
| 1074 70 | 1 | FEDER | 5131040206 | 4058546052683 |
| 1075 71 | 1 | GEHAEUSEKAPPE | 5131042847 | 4058546260613 |
| 1076 72 | 1 | SCHALTHEBEL | 5131049364 | 4058546607678 |
| 1077 73 | 1 | SCHALTHEBEL | 5131049364 | 4058546607678 |
| 1078 74 | 2 | SCHAUMSTOFF | 5131042850 | 4058546260644 |
| 1079 75 | 1 | SCHALTER | 5131042260 | 4058546254742 |
| 1080 76 | 1 | GEHAEUSE UNTEN | 5131042851 | 4058546260651 |
| 1081 77 | 1 | ABDECKUNG | 5131042262 | 4058546254766 |
| 1082 78 | 14 | SCHRAUBE | 5131041367 | 4058546066314 |
| 1083 79 | 1 | HANDGRIFF | 5131035681 | 4058546150853 |
| 1084 80 | 1 | ANZEIGER | 5131042852 | 4058546260668 |
| 1085 81 | 1 | DECKEL | 5131042853 | 4058546260675 |
| 1086 82 | 1 | RAHMEN | 5131042854 | 4058546260682 |
| 1087 83 | 1 | GRASFANGSACK | 5131042855 | 4058546260699 |
| 1088 84 | 1 | PART NOT DETAILED | 1000063920 | |
| 1089 85 | 1 | PART NOT DETAILED | 1000063920 | |
| 1090 86 | 2 | ANSCHLUSS | 5131040277 | 4058546053390 |
| 1091 87 | 1 | ANSCHLUSS | Item discontinued(5131034675) | |
| 1092 88 | 5 | SCHEIBE | 5131035656 | 4058546150617 |
| 1093 89 | 1 | MOTOR | 5131042877 | 4058546260910 |
| 1094 90 | 1 | GUMMIBUECHSE | 5131042822 | 4058546260361 |
| 1095 91 | 1 | ELEKTRONIK | 5131042878 | 4058546260927 |
| 1096 92 | 2 | ABDECKUNG | 5131042802 | 4058546260163 |
| 1097 93 | 1 | SICHERUNGSSCHLUESSEL | 5131035631 | 4058546150372 |
| 1012 94 | 1 | RAC435 Rasenmaeherblatt XXX | 5132004638 | 4892210183316 |