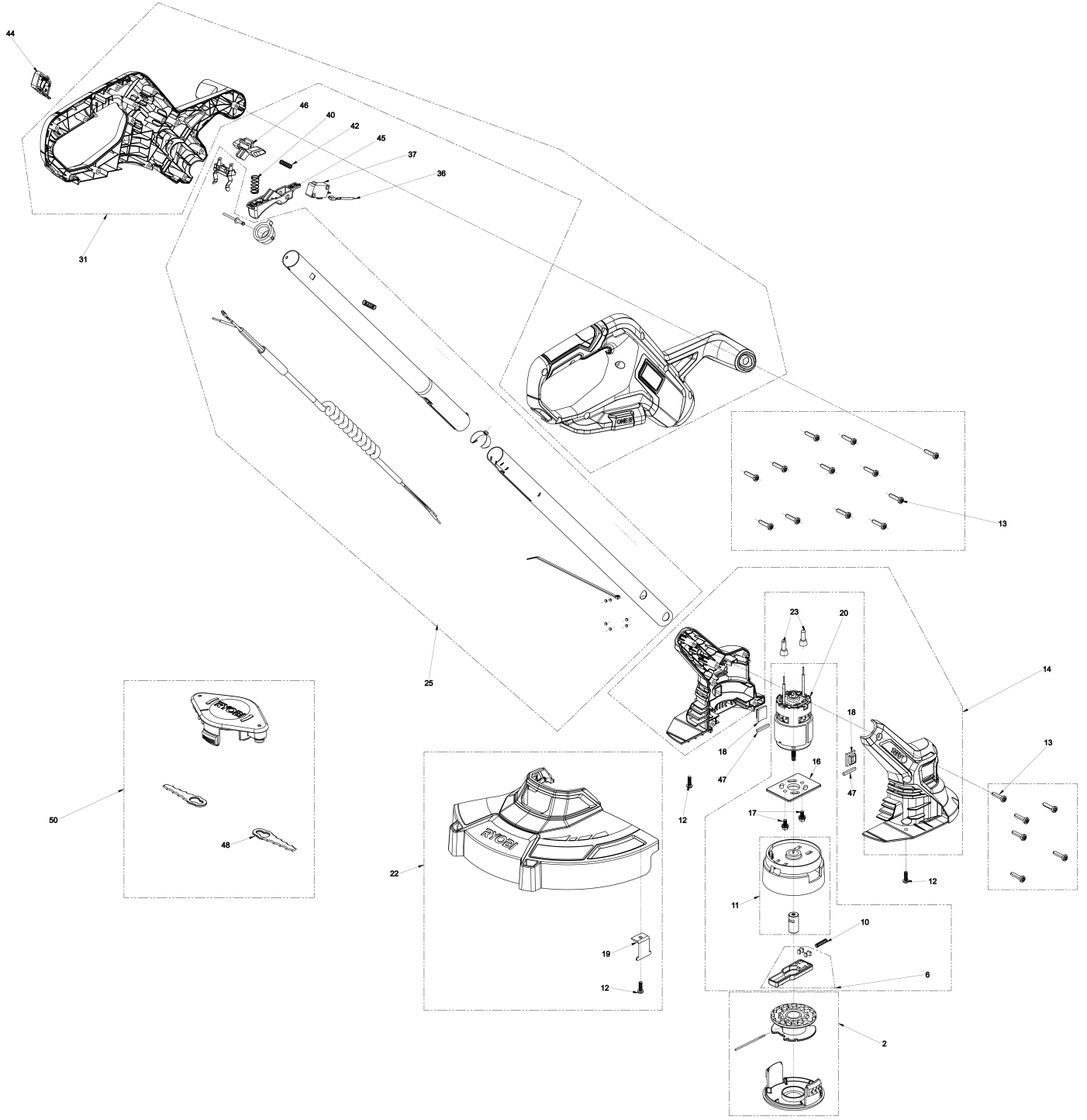


# **RY18LT23A-0 AKKU-RASENTRIMMER**

**5133005457 - RY18LT23A-0 - 4000475928**

# RYOBI

4000475928



| Position  | Quantity | Description                              | Part number                   | EAN           |
|-----------|----------|--|-------------------------------|---------------|
| 1         | 1        | PART NOT DETAILED                        | 1000063920                    |               |
| 1006 2    | 1        | SCHIEBER                                 | 5131049554                    | 4058546609573 |
| 1010 3    | 1        | FEDER                                    | 5131034745                    | 4058546143381 |
| 1011 4    | 1        | AUFNAHMESTUECK                           | 5131049555                    | 4058546609580 |
| 1012 5    | 3        | SCHRAUBE                                 | 5131034734                    | 4058546143275 |
| 1013 6    | 18       | SCHRAUBE                                 | 5131047770                    | 4058546504069 |
| 1014 7    | 1        | GEHAEUSE                                 | 5131049556                    | 4058546609597 |
| 1016 8    | 1        | ZWISCHENFLANSCH                          | 5131049557                    | 4058546609603 |
| 1017 9    | 2        | Schraube                                 | 5131035447                    | 4058546148690 |
| 1018 10   | 2        | GUMMIPLATTE                              | 5131035568                    | 4058546149772 |
| 1019 11   | 1        | KLINGE                                   | 5131049558                    | 4058546609610 |
| 1020 12   | 1        | DC-MOTOR                                 | 5131049559                    | 4058546609627 |
| 1022 13   | 1        | SCHUTZHAUBE                              | 5131049560                    | 4058546609634 |
| 1023 14   | 2        | ANSCHLUSS                                | 5131035584                    | 4058546149932 |
| 1025 15   | 1        | FUEHRUNGSROHR                            | 5131049561                    | 4058546609641 |
| 1031 16   | 1        | GEHAEUSE                                 | 5131049562                    | 4058546609658 |
| 1036 17   | 1        | LEITUNG                                  | 5131034676                    | 4058546142872 |
| 1037 18   | 1        | SCHALTER                                 | 5131036412                    | 4058546157807 |
| 1040 19   | 1        | FEDER                                    | 5131035454                    | 4058546148768 |
| 1042 20   | 1        | FEDER                                    | 5131045096                    | 4058546400170 |
| 1044 21   | 1        | DRUECKER                                 | 5131049563                    | 4058546609665 |
| 1045 22   | 1        | DRUECKER                                 | 5131049564                    | 4058546609672 |
| 1046 23   | 1        | KNOPF                                    | 5131049565                    | 4058546609689 |
| 1047 24   | 2        | MOOSGUMMI                                | Item discontinued(5131034752) |               |
| 1002 25   | 1        | RAC124 1.6mm Fadenspule f. RLT1830Li     | 5132002433                    | 4892210813473 |
| 1048 26   | 1        | RAC158 SCHLAGMESSER/KUNSTOFF XXX         | 5132004561                    | 4892210182999 |
| 1050 27   | 1        | RAC155 SCHLAGMESSER/KUNSTSTOFF XXX       | 5132004559                    | 4892210181862 |
| RAC125 28 | 1        | RAC125 3x Fadenspule f.Akku-Rasentr. XXX | 5132002434                    | 4892210813480 |