

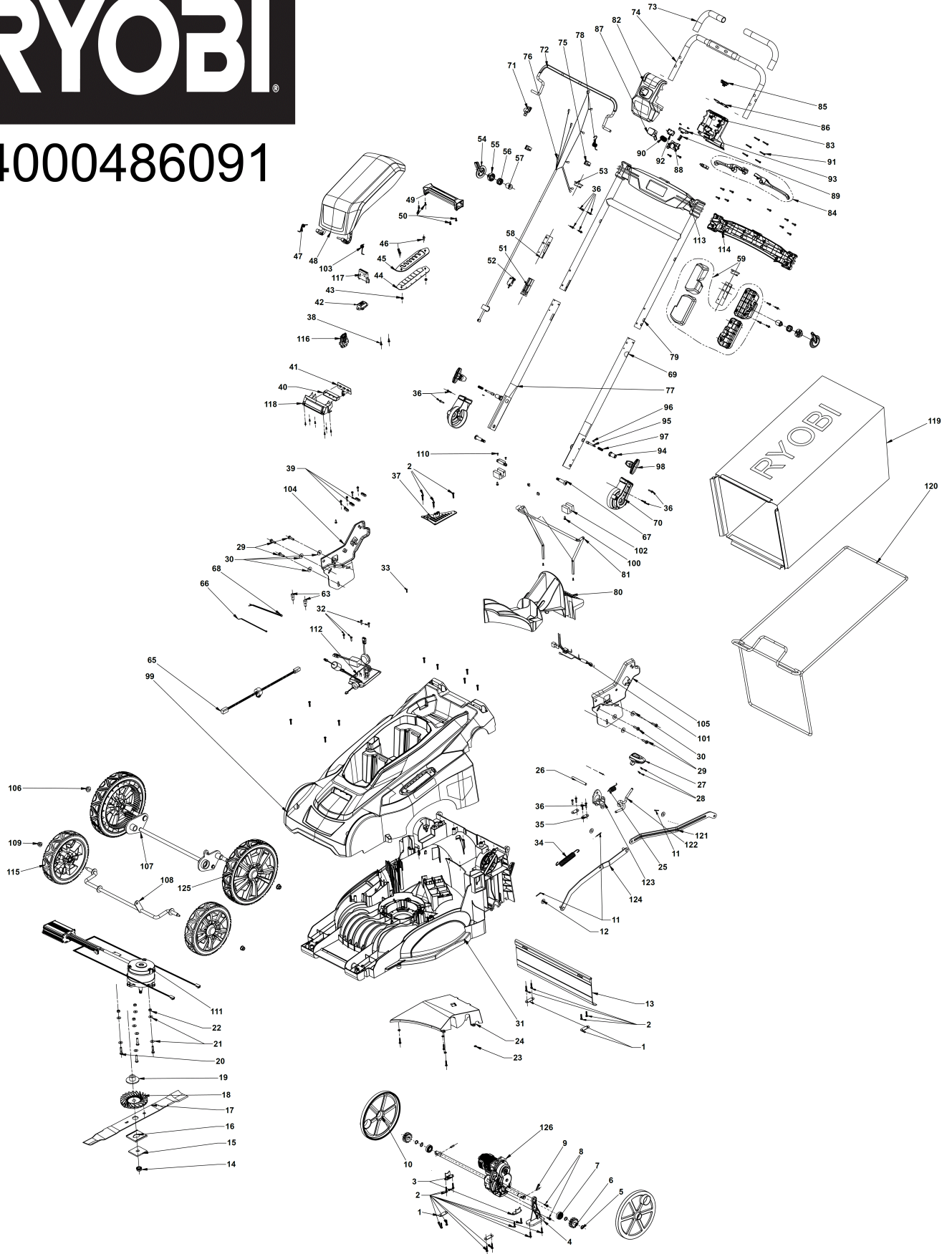
RY36LMX51A-150 AKKU-RASENMAEHER IN2

5133004646 - RY36LMX51A-150 - 4000486091





4000486091



| Position | Quantity | Description | Part number | EAN |
|----------|----------|---------------------|-------------------------------|---------------|
| 1001 1 | 4 | KLEMMLEISTE | 5131042942 | 4058546261566 |
| 1002 2 | 29 | SCHRAUBE | 5131035616 | 4058546150235 |
| 1003 3 | 2 | HALTERUNG | 5131042943 | 4058546261573 |
| 1004 4 | 1 | BEFESTIGUNGSTEIL | 5131042944 | 4058546261580 |
| 1005 5 | 4 | Sicherungsring | 5131001913 | 4058546162429 |
| 1006 6 | 2 | ZAHNRAD | 5131042945 | 4058546261597 |
| 1007 7 | 2 | LAGER | 5131040854 | 4058546061180 |
| 1008 8 | 2 | SCHRAUBE | 5131041891 | 4058546251055 |
| 1009 9 | 2 | STIFT | 5131042946 | 4058546261603 |
| 1010 10 | 2 | ABDECKUNG | 5131042947 | 4058546261610 |
| 1011 11 | 4 | STIFT | 5131035642 | 4058546150488 |
| 1012 12 | 3 | SCHEIBE | 5131035664 | 4058546056483 |
| 1013 13 | 1 | SCHUTZ | 5131042948 | 4058546261627 |
| 1014 14 | 1 | MUTTER | 5131035663 | 4058546150686 |
| 1015 15 | 1 | HALTEPLATTE | 5131035662 | 4058546150679 |
| 1016 16 | 1 | DISTANZSCHEIBE | 5131042949 | 4058546261634 |
| 1018 17 | 1 | LUEFTER | 5131043039 | 4058546262532 |
| 1019 18 | 1 | DISTANZSCHEIBE | 5131042951 | 4058546261658 |
| 1020 19 | 4 | SCHRAUBE | 5131035657 | 4058546150624 |
| 1021 20 | 8 | SCHEIBE | 5131035656 | 4058546150617 |
| 1022 21 | 4 | MUTTER | 5131035639 | 4058546150457 |
| 1023 22 | 4 | SCHEIBE | Item discontinued(5131033446) | |
| 1024 23 | 1 | ABDECKUNG | 5131042952 | 4058546261665 |
| 1025 24 | 1 | FEDER | Item discontinued(5131035670) | |
| 1026 25 | 1 | ACHSE | Item discontinued(5131035674) | |
| 1027 26 | 1 | GRIFF | 5131042953 | 4058546261672 |
| 1028 27 | 4 | SCHRAUBE | 5131035668 | 4058546150723 |
| 1029 28 | 6 | SCHRAUBE | 5131033516 | 4002395164387 |
| 1030 29 | 8 | SCHEIBE | 5131040192 | 4058546052546 |
| 1031 30 | 1 | PART NOT DETAILED | 1000063920 | |
| 1032 31 | 8 | SCHRAUBE | 5131044609 | 4058546383329 |
| 1033 32 | 1 | PART NOT DETAILED | 1000063920 | |
| 1034 33 | 1 | FEDER | Item discontinued(5131035731) | |
| 1035 34 | 2 | ZWISCHENFLANSCH | 5131041345 | 4058546066093 |
| 1036 35 | 28 | SCHRAUBE | 5131035603 | 4058546150105 |
| 1037 36 | 1 | BEFESTIGUNGSTEIL | 5131042955 | 4058546261696 |
| 1038 37 | 3 | SCHRAUBE | 5131036253 | 4058546156244 |
| 1039 38 | 4 | FEDERKLEMME | 5131035646 | 4058546150525 |
| 1040 39 | 1 | SCHUTZKAPPE | 5131042956 | 4058546261702 |
| 1041 40 | 1 | ELEKTRONIK | 5131042957 | 4058546261719 |
| 1042 41 | 1 | TRAEGER | 5131035636 | 4058546150426 |
| 1043 42 | 2 | MUTTER | 5131011814 | 4058546098957 |
| 1044 43 | 1 | GUMMIPLATTE | 5131042958 | 4058546261726 |
| 1045 44 | 1 | EINSTELLVORRICHTUNG | 5131042959 | 4058546261733 |
| 1046 45 | 2 | SCHRAUBE | 5131035632 | 4058546150389 |
| 1047 46 | 1 | FEDER | 5131042960 | 4058546261740 |
| 1048 47 | 1 | DECKEL | 5131042961 | 4058546261757 |
| 1049 48 | 1 | HALTEGRIFF | 5131042962 | 4058546261764 |
| 1050 49 | 4 | SCHRAUBE | 5131035593 | 4058546150013 |
| 1051 50 | 1 | STOPFEN | 5131042963 | 4058546261771 |

| Position | Quantity | Description | Part number | EAN |
|----------|----------|---------------------|-------------|---------------|
| 1052 51 | 1 | SCHALTER | 5131033532 | 4002395147748 |
| 1053 52 | 2 | DICHTBUECHSE | 5131033530 | 4002395147724 |
| 1054 53 | 2 | RIEGEL | 5131042964 | 4058546261788 |
| 1055 54 | 2 | HALTER | 5131042965 | 4058546261795 |
| 1056 55 | 2 | FEDER | 5131042966 | 4058546261801 |
| 1057 56 | 2 | GUMMISCHEIBE | 5131042967 | 4058546261818 |
| 1058 57 | 2 | HUELSE | 5131042968 | 4058546261825 |
| 1059 58 | 1 | GEHAEUSE | 5131042969 | 4058546261832 |
| 1063 59 | 2 | ANSCHLUSS | 5131040277 | 4058546053390 |
| 1065 60 | 1 | LEITUNG | 5131042970 | 4058546261849 |
| 1066 61 | 1 | KLAMMER | 5131035630 | 4058546056124 |
| 1067 62 | 2 | SCHRAUBE | 5131042971 | 4058546261856 |
| 1068 63 | 1 | KA-BINDER | 5131042972 | 4058546261863 |
| 1069 64 | 1 | FUEHRUNGSSTANGE | 5131042973 | 4058546261870 |
| 1070 65 | 2 | GELENKSTUECK | 5131042974 | 4058546261887 |
| 1071 66 | 1 | SCHALTHEBEL | 5131042975 | 4058546261894 |
| 1072 67 | 1 | BETAETIGUNGSHABEL | 5131042976 | 4058546261900 |
| 1073 68 | 2 | SCHAUM STOFFSTUECK | 5131042977 | 4058546261917 |
| 1074 69 | 1 | HANDGRIFF | 5131042978 | 4058546261924 |
| 1075 70 | 2 | SCHALTER | 5131042979 | 4058546261931 |
| 1076 71 | 1 | KABELBAUM | 5131042980 | 4058546261948 |
| 1077 72 | 1 | KABELBAUM | 5131042981 | 4058546261955 |
| 1078 73 | 1 | FEDER | 5131042982 | 4058546261962 |
| 1079 74 | 1 | GRIFF | 5131042983 | 4058546261979 |
| 1080 75 | 1 | MULCHADAPTER | 5131042984 | 4058546261986 |
| 1081 76 | 1 | GESTELL | 5131042985 | 4058546261993 |
| 1082 77 | 1 | GEHAEUSEDECKEL | 5131042986 | 4058546262006 |
| 1083 78 | 1 | GEHAEUSE | 5131042987 | 4058546262013 |
| 1084 79 | 1 | DRUECKER | 5131042988 | 4058546262020 |
| 1085 80 | 1 | SCHIEBER | 5131042989 | 4058546262037 |
| 1086 81 | 1 | MITNEHMER | 5131042990 | 4058546262044 |
| 1087 82 | 1 | KNOPF | 5131042991 | 4058546262051 |
| 1088 83 | 1 | HALTER | 5131042992 | 4058546262068 |
| 1089 84 | 1 | FEDER | 5131036409 | 4058546157777 |
| 1090 85 | 1 | FEDER | 5131042993 | 4058546262075 |
| 1091 86 | 6 | SCHRAUBE | 5131034780 | 4058546143510 |
| 1092 87 | 2 | SCHALTER | 5131033535 | 4002395147779 |
| 1093 88 | 1 | SCHALTER | 5131042994 | 4058546262082 |
| 1094 89 | 2 | HUELSE | 5131042995 | 4058546262099 |
| 1095 90 | 2 | STIFT | 5131042996 | 4058546262105 |
| 1096 91 | 2 | STIFT | 5131040245 | 4058546053079 |
| 1097 92 | 2 | FEDER | 5131033550 | 4002395149124 |
| 1098 93 | 2 | GRIFF | 5131042997 | 4058546262112 |
| 1099 94 | 1 | GEHAEUSE | 5131042998 | 4058546262129 |
| 1100 95 | 2 | SCHRAUBE | 5131044653 | 4058546383763 |
| 1101 96 | 1 | LEITUNG | 5131042999 | 4058546262136 |
| 1102 97 | 2 | KONTAKT | 5131045459 | 4058546430511 |
| 1103 98 | 1 | FEDER | 5131043001 | 4058546262150 |
| 1104 99 | 1 | RECHTER HALTEBUEGEL | 5131043002 | 4058546262167 |
| 1105 100 | 1 | LINKER HALTEBUEGEL | 5131043003 | 4058546262174 |

| Position | Quantity | Description | Part number | EAN |
|----------|----------|--------------------------------------|-------------|---------------|
| 1106 101 | 2 | MUTTER | 5131033513 | 4002395164356 |
| 1107 102 | 1 | ACHSE | 5131045993 | 4058546456252 |
| 1108 103 | 1 | ACHSE | 5131045994 | 4058546456269 |
| 1109 104 | 2 | MUTTER | 5131033521 | 4002395147038 |
| 1110 105 | 2 | SCHRAUBE | 5131011398 | 4058546044947 |
| 1111 106 | 1 | MOTOR | 5131043006 | 4058546262204 |
| 1112 107 | 1 | ELEKTRONIK | 5131043007 | 4058546262211 |
| 1113 108 | 1 | GRIFF LINKS | 5131043008 | 4058546262228 |
| 1114 109 | 1 | GRIFF RECHTS | 5131043009 | 4058546262235 |
| 1115 110 | 2 | RAD | 5131043010 | 4058546262242 |
| 1116 111 | 1 | SICHERUNGSSCHLUESSEL | 5131035631 | 4058546150372 |
| 1117 112 | 1 | AUFNAHMESCHAFT | 5131043011 | 4058546262259 |
| 1118 113 | 1 | ABDECKUNG | 5131043012 | 4058546262266 |
| 1119 114 | 1 | GRASFANGSACK | 5131043013 | 4058546262273 |
| 1120 115 | 1 | GESTELL | 5131043014 | 4058546262280 |
| 1121 116 | 1 | HALTEBUEGEL | 5131043015 | 4058546262297 |
| 1122 117 | 1 | KIPPHEBEL | 5131045995 | 4058546456276 |
| 1123 118 | 1 | HALTERUNG | 5131043017 | 4058546262310 |
| 1124 119 | 1 | HALTEBUEGEL | 5131043018 | 4058546262327 |
| 1125 120 | 2 | RAD | 5131043019 | 4058546262334 |
| 1126 121 | 1 | ANTRIEB | 5131043020 | 4058546262341 |
| 1017 122 | 1 | Ersatzmesser 36 V Rasenmaeher, 51 cm | 5132004639 | 4892210185921 |