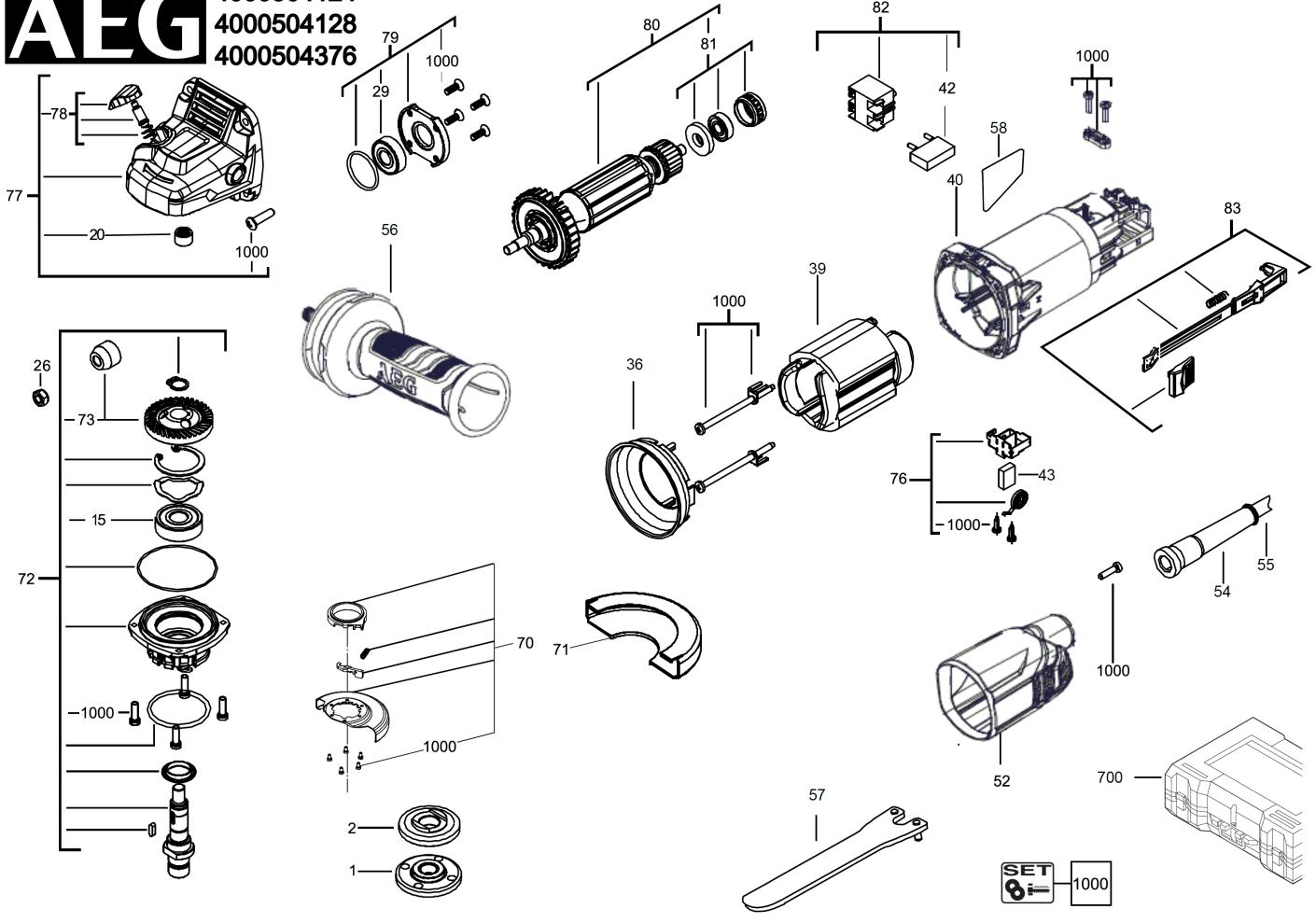


# **WS12-125SK Winkelschleifer IN2**

**4935451307 - WS12-125SK - 4000504128**

**AEG** 4000504124  
4000504128  
4000504376



| Position | Quantity | Description          | Part number                   | EAN           |
|----------|----------|----------------------|-------------------------------|---------------|
| 0001 1   | 1        | SPANNFLANSCH         | 4931508071                    | 4058546627331 |
| 0002 2   | 1        | FLANSCH              | 4931453620                    | 4002395145942 |
| 0015 3   | 1        | KUGELLAGER           | 4931453697                    | 4002395146130 |
| 0020 4   | 1        | NADELLAGER           | 4931453616                    | 4002395145904 |
| 0026 5   | 1        | MUTTER               | 4931428715                    | 4002395844364 |
| 0029 6   | 1        | KUGELLAGER           | 4931453633                    | 4002395146673 |
| 0036 7   | 1        | LUFTFUEHRUNGSRING    | 4931428721                    | 4002395844425 |
| 0039 8   | 1        | FELD F. ELEKTROMOTOR | 4931428724                    | 4002395844456 |
| 0040 9   | 1        | MOTORGEHAEUSE        | 4931453698                    | 4002395146147 |
| 0042 10  | 1        | KONDENSATOR          | 4931428728                    | 4002395844494 |
| 0043 11  | 2        | KOHLEBUERSTE         | 4931428732                    | 4002395844531 |
| 0052 12  | 1        | ABDECKKAPPE          | 4931453699                    | 4002395146154 |
| 0054 13  | 1        | KABELSCHUTZSCHLAUCH  | 4931428735                    | 4002395844562 |
| 0055 14  | 1        | ANSCHLUSSLEITUNG     | 4931428736                    | 4002395844579 |
| 0056 15  | 1        | HANDGRIFF            | 4931428739                    | 4002395844609 |
| 0057 16  | 1        | MUTTERNDREHER        | 4931508074                    | 4058546627362 |
| 0058 17  | 1        | LEISTUNGSSCHILD      | Item discontinued(4931508092) |               |
| 0070 18  | 1        | SCHUTZHAUBE          | 4931508081                    | 4058546627430 |
| 0071 19  | 1        | TRENNSCHUTZHAUBE     | 4931508075                    | 4058546627379 |
| 0072 20  | 1        | SPINDEL SATZ         | 4931508083                    | 4058546627454 |
| 0073 21  | 1        | ANTRIEB              | 4931508084                    | 4058546627461 |
| 0076 22  | 2        | BUERSTENHALTER       | 4931508085                    | 4058546627478 |
| 0077 23  | 1        | GETRIEBEKASTEN       | 4931508086                    | 4058546627485 |
| 0078 24  | 1        | ARRETIERBOLZEN       | 4931508087                    | 4058546627492 |
| 0079 25  | 1        | LAGERSATZ            | 4931508088                    | 4058546627508 |
| 0080 26  | 1        | ANKER F.ELEKTROMOTOR | 4931508094                    | 4058546627560 |
| 0081 27  | 1        | LAGER                | 4931508089                    | 4058546627515 |
| 0082 28  | 1        | ELEKTRONIKSCHALTER   | 4931453713                    | 4002395146895 |
| 0083 29  | 1        | SCHALTHEBEL          | 4931453708                    | 4002395146840 |
| 0700 30  | 1        | TRANSPORTKASTEN      | 4931453709                    | 4002395146857 |
| 1000 31  | 1        | SCHRAUBENSET         | 4931508095                    | 4058546627577 |