

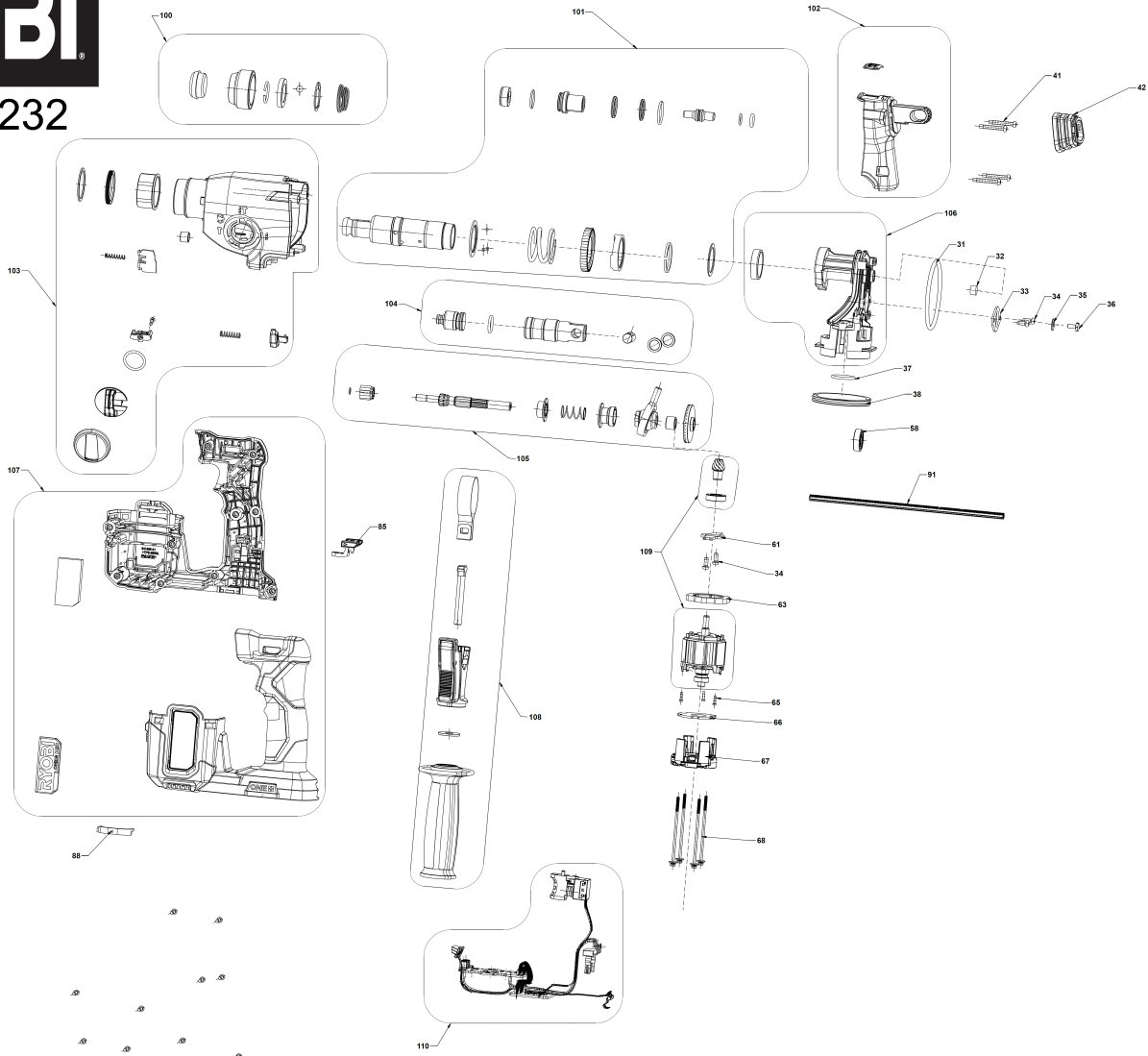
# RSDS18BL-0 AKKU-BOHRHAMMER XXX

5133006493 - RSDS18BL-0 - 4000504232



# RYOBI

4000504232



Position	Quantity	Description	Part number	EAN
1031 1	1	O-RING	5131044983	4058546399047
1032 2	1	DICHTUNGSFILZ	5131044984	4058546399054
1033 3	1	HALTEPLATTE	5131044985	4058546399061
1034 4	4	SCHRAUBE	5131033591	4002395148042
1035 5	1	Unterlegscheibe	5131001078	4058546080877
1036 6	1	SCHRAUBE	5131044986	4058546399078
1037 7	1	O-RING	5131044987	4058546399085
1038 8	2	GUMMIPUFFER	5131044988	4058546399092
1041 9	4	SCHRAUBE	5131044989	4058546399108
1042 10	1	GUMMIPUFFER	5131044990	4058546399115
1058 11	1	LAGER	5131048614	4058546547431
1061 12	1	HALTEPLATTE	5131044992	4058546399139
1063 13	1	DISTANZSCHEIBE	5131041186	4058546064501
1065 14	3	SCHRAUBE	5131043756	4058546351168
1066 15	1	SCHEIBE	5131044993	4058546399146
1067 16	1	MOTORKAPPE	5131044994	4058546399153
1068 17	4	SCHRAUBE	5131041195	4058546064594
1085 18	1	KNOPF	5131044995	4058546399160
1088 19	1	ZWISCHENFLANSCH	5131044996	4058546399177
1091 20	1	TIEFENANSCHLAG	5131048615	4058546547448
1100 21	1	BOHRFUTTER	5131048616	4058546547455
1101 22	1	SPINDEL	5131048617	4058546547462
1102 23	1	ABDECKUNG	5131048618	4058546547479
1103 24	1	GETRIEBEGEHAEUSE	5131045000	4058546399214
1104 25	1	SPINDEL	5131048619	4058546547486
1105 26	1	KOLBEN M.PLEUEL	5131048620	4058546547493
1106 27	1	GETRIEBEKASTEN	5131048621	4058546547509
1107 28	1	GEHAEUSE	5131048622	4058546547516
1108 29	1	ZUSATZHANDGRIFF	5131045005	4058546399269
1109 30	1	DC-MOTOR	5131048623	4058546547523
1110 31	1	ELEKTRONIK	5131048624	4058546547530