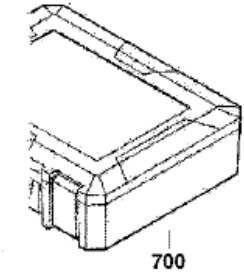


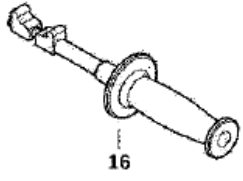
HD28PD-502X AKKU-SCHLAGBOHRER IN2

4933448544 - HD28PD-502X - 4000431265



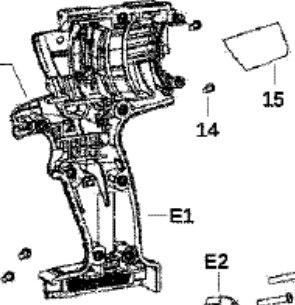


700



16

5	E1	E3
	E2	E4

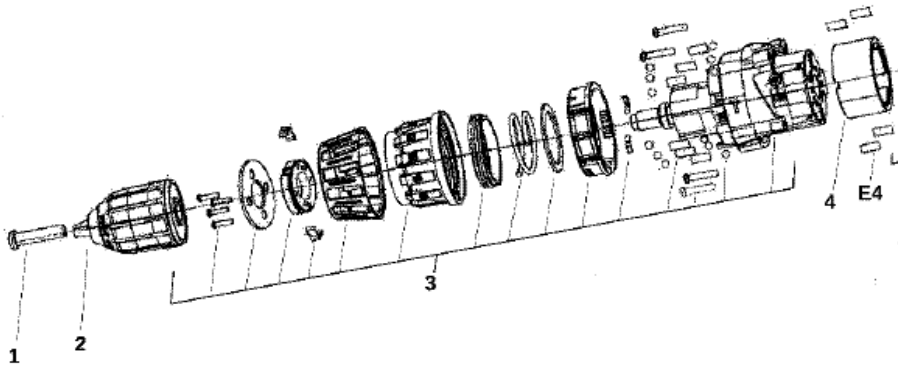


12

E1

14

15



1

2

3

4

E4

6

7

17

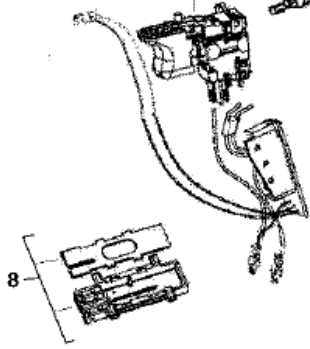
9

13

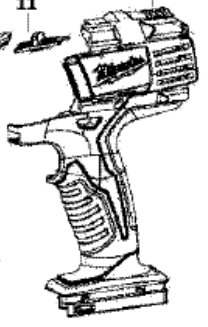
10

11

E3



8



E3

Position	Quantity	Description	Part number	EAN
0001 1	1	SCHRAUBE	4931433297	4002395896684
0002 2	1	SCHNELLSP. BOHRF.	4931440403	4002395862535
0003 3	1	GETRIEBEGEHAEUSE	200281032	4002395834204
0004 4	1	FELD F. ELEKTROMOTOR	4931440971	4002395863198
0005 5	1	GEHAEUSE	200235031	4002395834457
0006 6	1	ANKER F. ELEKTROMOTOR	200216058	4002395834440
0007 7	1	SCHALTER-SET	4931433310	4002395901777
0008 8	1	VERBINDUNGSTEIL	200529004	4002395834181
0009 9	1	KAPPE	512419001	4002395825400
0010 10	1	KNOPF R/L UMSCHALTER	513257001	4002395825417
0011 11	1	GANGUMSCHALTER 1/2	340425012	4002395825578
0012 12	1	SCHRAUBE	660031017	4002395825189
0013 13	1	SCHRAUBE	660031016	4002395825172
0014 14	1	SCHRAUBE	660851001	4002395823239
0015 15	1	LEISTUNGSSCHILD	4931433311	4002395901784
0016 16	1	HANDGRIFF	4931416738	4002395827480
0017 17	1	KOHLEBUERSTEN-SET	4931441429	4002395870042
0700 18	1	TRANSPORTKOFFER	4931415385	4002395828012
19	1	M28C LADEGERAeT (28V) IN2	4932352524	4002395371822
20	2	M28B5 LI-ION 5.0AH AKKU XXX	4932430484	4002395381456