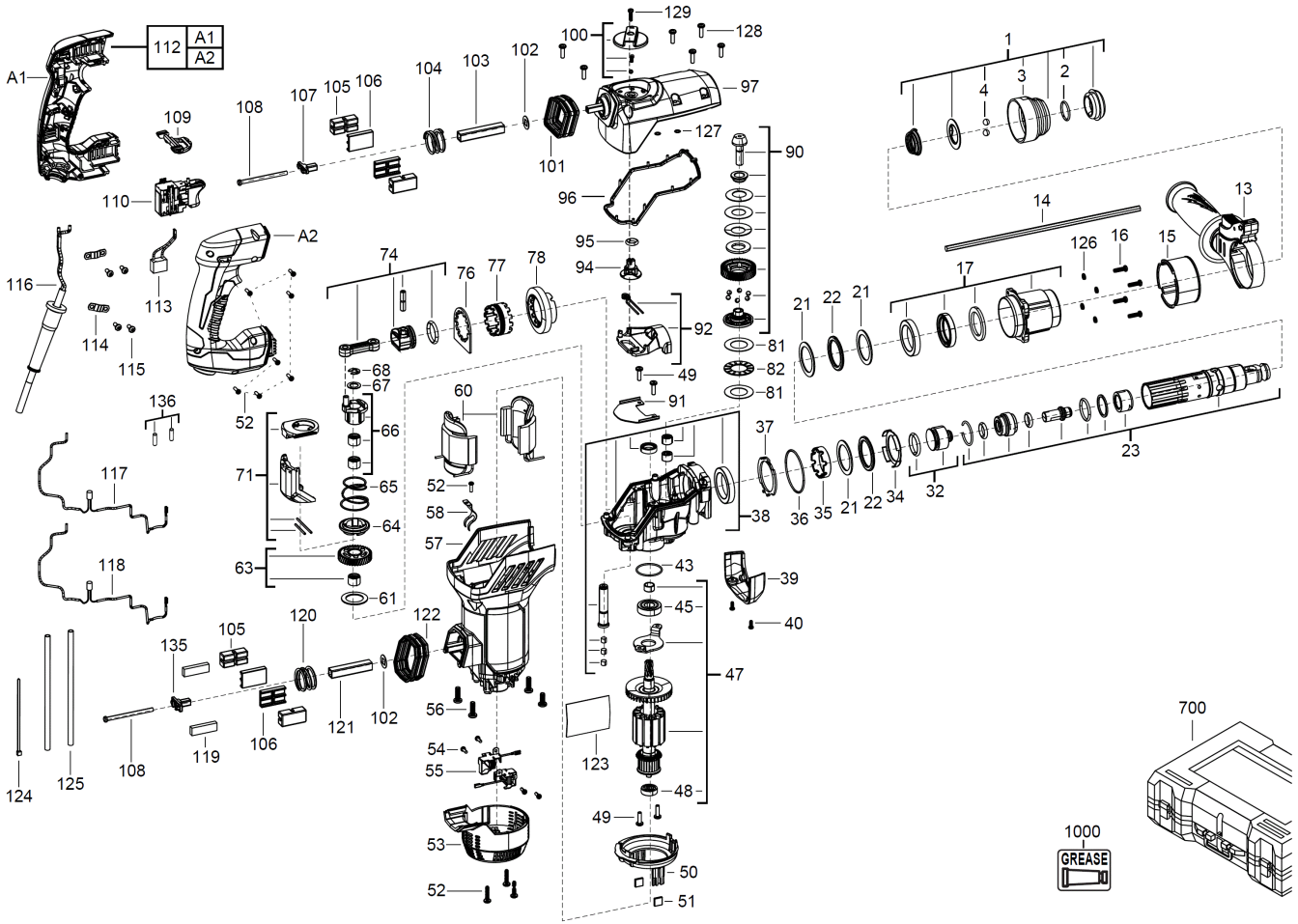


# PLH28E BOHRHAMMER ME2

4933448485 - PLH28E - 4000452086





| Position | Quantity | Description                      | Part number                   | EAN           |
|----------|----------|----------------------------------|-------------------------------|---------------|
| 0001 1   | 1        | VERSCHLUSSKAPPE SET              | 4931436446                    | 4002395249640 |
| 0002 2   | 1        | SPRENGRING                       | Item discontinued(672631001)  |               |
| 0003 3   | 1        | VERSSCHLUSSKAPPE                 | 4931436447                    | 4002395248858 |
| 0004 4   | 2        | KUGEL                            | 681154001                     | 4002395856367 |
| 0013 5   | 1        | ZUSATZHANDGRIFF                  | 4931436368                    | 4002395250875 |
| 0014 6   | 1        | TIEFENANSCHLAG                   | 4931384434                    | 4002395719402 |
| 0015 7   | 1        | HUELSE                           | 4931436369                    | 4002395250882 |
| 0016 8   | 4        | SCHRAUBE                         | 4931435150                    | 4002395859948 |
| 0017 9   | 1        | HUELSE                           | 4931436370                    | 4002395250899 |
| 0021 10  | 3        | SCHEIBE                          | 4931436371                    | 4002395251506 |
| 0022 11  | 2        | GUMMISCHEIBE                     | 4931436372                    | 4002395251513 |
| 0023 12  | 1        | SPINDEL SATZ                     | 4931436448                    | 4002395248841 |
| 0032 13  | 1        | SCHLAGKOERPER                    | 4931436374                    | 4002395251537 |
| 0034 14  | 1        | PUFFER                           | 4931436375                    | 4002395251544 |
| 0035 15  | 1        | SPINDEL RING                     | 4931436376                    | 4002395251551 |
| 0036 16  | 1        | O-RING                           | 4931436377                    | 4002395251568 |
| 0037 17  | 1        | PLATTE                           | 4931436378                    | 4002395251575 |
| 0038 18  | 1        | GETRIEBEKASTEN                   | 4931436379                    | 4002395251582 |
| 0039 19  | 1        | GEHAEUSE                         | 4931436380                    | 4002395251599 |
| 0040 20  | 2        | SCHRAUBE                         | Item discontinued(4931435313) |               |
| 0043 21  | 1        | O-RING                           | 4931436381                    | 4002395248896 |
| 0045 22  | 1        | KUGELLAGER                       | 4931452227                    | 4002395180547 |
| 0047 23  | 1        | ANKER F.ELEKTROMOTOR             | 4931436383                    | 4002395249510 |
| 0048 24  | 1        | KUGELLAGER                       | 4931436119                    | 4002395881475 |
| 0049 25  | 4        | SCHRAUBE                         | 660165015                     | 4002395849826 |
| 0050 26  | 1        | LUFTFUEHRUNGSRING                | 4931436385                    | 4002395249534 |
| 0051 27  | 2        | Gummiblock                       | 4931435034                    | 4002395854615 |
| 0052 28  | 11       | SCHRAUBE M3,5 Torx 10            | 660031023                     | 4002395831623 |
| 0053 29  | 1        | KOEHLENHALTERDECKEL              | Item discontinued(4931436386) |               |
| 0054 30  | 4        | SCHRAUBE                         | Item discontinued(4931436387) |               |
| 0055 31  | 1        | BUERSTENHALTER mit Kohlebuersten | 4931436388                    | 4002395249565 |
| 0056 32  | 4        | SCHRAUBE                         | 4931436390                    | 4002395249589 |
| 0057 33  | 1        | MOTORGEHAEUSE                    | 4931436391                    | 4002395249596 |
| 0058 34  | 1        | STEMPEL                          | 4931436392                    | 4002395250202 |
| 0060 35  | 1        | FELD F. ELEKTROMOTOR             | 4931436393                    | 4002395250219 |
| 0061 36  | 1        | SCHEIBE                          | 4931436395                    | 4002395250233 |
| 0063 37  | 1        | KURBELRAD                        | 4931436450                    | 4002395248827 |
| 0064 38  | 1        | RING                             | 4931436397                    | 4002395250257 |
| 0065 39  | 1        | FEDER                            | 4931436398                    | 4002395250264 |
| 0066 40  | 1        | KURBELRAD                        | 4931436451                    | 4002395248810 |
| 0067 41  | 1        | SCHEIBE                          | 4931436400                    | 4002395250288 |
| 0068 42  | 1        | RING                             | 4931436401                    | 4002395250295 |
| 0071 43  | 1        | UMSCHALTER                       | 4931436402                    | 4002395250905 |
| 0074 44  | 1        | KOLBEN                           | 4931436403                    | 4002395250912 |
| 0076 45  | 1        | HALTEPLATTE                      | 4931436404                    | 4002395250929 |
| 0077 46  | 1        | SCHALTHUELSE                     | 4931436405                    | 4002395250936 |
| 0078 47  | 1        | KEGELRAD                         | 4931436406                    | 4002395250943 |
| 0081 48  | 2        | SCHEIBE                          | 4931436407                    | 4002395250950 |
| 0082 49  | 1        | NADELLAGER                       | 4931436408                    | 4002395250967 |
| 0090 50  | 1        | KUPPLUNG                         | 4931436409                    | 4002395250974 |

| Position | Quantity | Description                             | Part number                   | EAN           |
|----------|----------|---|-------------------------------|---------------|
| 0091 51  | 1        | STEMPEL                                 | 4931436410                    | 4002395250981 |
| 0092 52  | 1        | GABEL                                   | 4931436411                    | 4002395250998 |
| 0094 53  | 1        | VERBINDUNGSTEIL                         | 4931436412                    | 4002395251605 |
| 0095 54  | 1        | O-RING                                  | 4931436413                    | 4002395251612 |
| 0096 55  | 1        | Dichtung, FKM f. Getriebe im Bohrhammer | 4931448574                    | 4002395179534 |
| 0097 56  | 1        | GETRIEBEBEDECKEL                        | Item discontinued(4931452225) |               |
| 0100 57  | 1        | KNOPF                                   | 4931436416                    | 4002395251643 |
| 0101 58  | 1        | GUMMIKAPPE                              | 4931436417                    | 4002395251650 |
| 0102 59  | 2        | SCHEIBE                                 | 4931436418                    | 4002395251667 |
| 0103 60  | 1        | FUEHRUNGSHUELSE                         | Item discontinued(4931436419) |               |
| 0104 61  | 1        | FEDER                                   | 4931436420                    | 4002395251681 |
| 0105 62  | 4        | DAEMPFER                                | Item discontinued(4931436421) |               |
| 0106 63  | 4        | HALTER                                  | 4931436422                    | 4002395248902 |
| 0107 64  | 1        | GEHAEUSE                                | 4931436423                    | 4002395248919 |
| 0108 65  | 2        | SCHRAUBE                                | 4931436424                    | 4002395248926 |
| 0109 66  | 1        | DRUECKER                                | 4931436425                    | 4002395248933 |
| 0110 67  | 1        | SCHALTER                                | 4931452226                    | 4002395180530 |
| 0112 68  | 1        | HANDGRIFF KOMPL.                        | 4931436427                    | 4002395248957 |
| 0113 69  | 1        | KONDENSATOR                             | 4931436428                    | 4002395248964 |
| 0114 70  | 2        | STEMPELFUEHRUNG                         | 632823001                     | 4002395855155 |
| 0115 71  | 4        | SCHRAUBE                                | 661189001                     | 4002395855148 |
| 0116 72  | 1        | ANSCHLUSSLEITUNG                        | 4931436429                    | 4002395248971 |
| 0117 73  | 1        | DROSSEL                                 | 4931436432                    | 4002395249657 |
| 0118 74  | 1        | DROSSEL                                 | 4931436433                    | 4002395249664 |
| 0119 75  | 2        | SCHAUMSTOFF                             | 4931436434                    | 4002395249671 |
| 0120 76  | 1        | FEDER                                   | 4931436435                    | 4002395249688 |
| 0121 77  | 1        | ROHR                                    | 4931436436                    | 4002395249695 |
| 0122 78  | 1        | GUMMIPUFFER                             | 4931436437                    | 4002395250301 |
| 0123 79  | 1        | LEISTUNGSSCHILD                         | 4931452089                    | 4002395179862 |
| 0124 80  | 1        | Nylon-Schnur                            | 4931436441                    | 4002395250318 |
| 0125 81  | 2        | HUELSE                                  | 4931436442                    | 4002395250325 |
| 0126 82  | 4        | SICHERUNGSRING                          | 680866003                     | 4002395823895 |
| 0127 83  | 2        | O-RING                                  | 4931436443                    | 4002395250332 |
| 0128 84  | 6        | SCHRAUBE                                | 4931436444                    | 4002395250349 |
| 0129 85  | 1        | SCHRAUBE                                | 660031017                     | 4002395825189 |
| 0135 86  | 1        | HALTEPLATTE                             | Item discontinued(4931447719) |               |
| 0136 87  | 1        | ISOLIERSCHLAUCH                         | Item discontinued(4931448845) |               |
| 0700 88  | 1        | 4RANSPORTKOFFER                         | 4931436445                    | 4002395249633 |
| 1000 89  | 1        | GETRIEBEFETT                            | 4931443288                    | 4002395255627 |