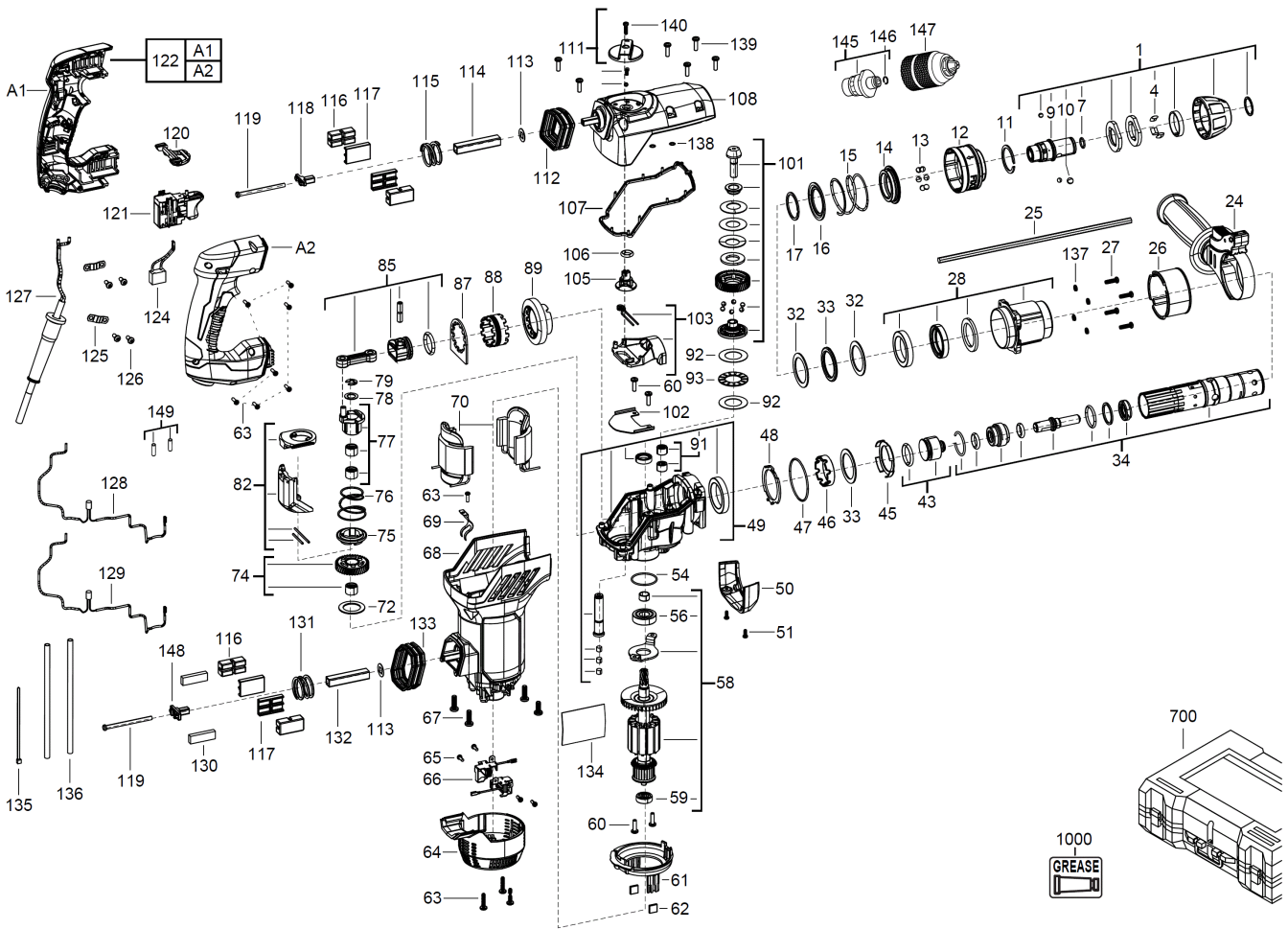


PLH28XE BOHRHAMMER GB1

4933446825 - PLH28XE - 4000452099





| Position | Quantity | Description | Part number | EAN |
|----------|----------|-----------------------|-------------------------------|---------------|
| 0001 1 | 1 | FIXTEC-ADAPTER | 4931436361 | 4002395250806 |
| 0004 2 | 3 | GUMMIPUFFER | Item discontinued(562578001) | |
| 0007 3 | 1 | O-RING | 4931454454 | 4058546008826 |
| 0009 4 | 1 | ADAPTER | 4931409763 | 4002395834709 |
| 0010 5 | 1 | KUGEL | 681154001 | 4002395856367 |
| 0011 6 | 1 | SPRENGRING | 4931436362 | 4002395250813 |
| 0012 7 | 1 | BUND | 4931436363 | 4002395250820 |
| 0013 8 | 6 | KUGEL | 681486001 | 4002395851928 |
| 0014 9 | 1 | RING | 4931436364 | 4002395250837 |
| 0015 10 | 1 | FEDERRING | 4931436365 | 4002395250844 |
| 0016 11 | 1 | FEDER | 4931436366 | 4002395250851 |
| 0017 12 | 1 | SPRENGRING | Item discontinued(4931436367) | |
| 0024 13 | 1 | ZUSATZHANDGRIFF | 4931436368 | 4002395250875 |
| 0025 14 | 1 | TIEFENANSCHLAG | 4931384434 | 4002395719402 |
| 0026 15 | 1 | HUELSE | 4931436369 | 4002395250882 |
| 0027 16 | 4 | SCHRAUBE | 4931435150 | 4002395859948 |
| 0028 17 | 1 | HUELSE | 4931436370 | 4002395250899 |
| 0032 18 | 3 | SCHEIBE | 4931436371 | 4002395251506 |
| 0033 19 | 2 | GUMMISCHEIBE | 4931436372 | 4002395251513 |
| 0034 20 | 1 | SPINDEL | 4931448975 | 4002395258840 |
| 0043 21 | 1 | SCHLAGKOERPER | 4931436374 | 4002395251537 |
| 0045 22 | 1 | PUFFER | 4931436375 | 4002395251544 |
| 0046 23 | 1 | SPINDEL RING | 4931436376 | 4002395251551 |
| 0047 24 | 1 | O-RING | 4931436377 | 4002395251568 |
| 0048 25 | 1 | PLATTE | 4931436378 | 4002395251575 |
| 0049 26 | 1 | GETRIEBEKASTEN | 4931436379 | 4002395251582 |
| 0050 27 | 1 | GEHAEUSE | 4931436380 | 4002395251599 |
| 0051 28 | 2 | SCHRAUBE | Item discontinued(4931435313) | |
| 0054 29 | 1 | O-RING | 4931436381 | 4002395248896 |
| 0056 30 | 1 | KUGELLAGER | 4931452227 | 4002395180547 |
| 0058 31 | 1 | ANKER F.ELEKTROMOTOR | 4931436384 | 4002395249527 |
| 0059 32 | 1 | KUGELLAGER | 4931436119 | 4002395881475 |
| 0060 33 | 4 | SCHRAUBE | 660165015 | 4002395849826 |
| 0061 34 | 1 | LUFTFUEHRUNGSRING | 4931436385 | 4002395249534 |
| 0062 35 | 2 | Gummiblock | 4931435034 | 4002395854615 |
| 0063 36 | 11 | SCHRAUBE M3,5 Torx 10 | 660031023 | 4002395831623 |
| 0064 37 | 1 | KOEHLENHALTERDECKEL | Item discontinued(4931436386) | |
| 0065 38 | 4 | SCHRAUBE | Item discontinued(4931436387) | |
| 0066 39 | 1 | BUERSTENHALTER | 4931436389 | 4002395249572 |
| 0067 40 | 4 | SCHRAUBE | 4931436390 | 4002395249589 |
| 0068 41 | 1 | MOTERGEHAEUSE | 4931436391 | 4002395249596 |
| 0069 42 | 1 | STEMPEL | 4931436392 | 4002395250202 |
| 0070 43 | 1 | FELD F. ELEKTROMOTOR | 4931436394 | 4002395250226 |
| 0072 44 | 1 | SCHEIBE | 4931436395 | 4002395250233 |
| 0074 45 | 1 | KURBELRAD | 4931436396 | 4002395250240 |
| 0075 46 | 1 | RING | 4931436397 | 4002395250257 |
| 0076 47 | 1 | FEDER | 4931436398 | 4002395250264 |
| 0077 48 | 1 | EXZENTER | 4931436399 | 4002395250271 |
| 0078 49 | 1 | SCHEIBE | 4931436400 | 4002395250288 |
| 0079 50 | 1 | RING | 4931436401 | 4002395250295 |

| Position | Quantity | Description | Part number | EAN |
|----------|----------|---|-------------------------------|---------------|
| 0082 51 | 1 | UMSCHALTER | 4931436402 | 4002395250905 |
| 0085 52 | 1 | KOLBEN | 4931436403 | 4002395250912 |
| 0087 53 | 1 | HALTEPLATTE | 4931436404 | 4002395250929 |
| 0088 54 | 1 | SCHALTHUELSE | 4931436405 | 4002395250936 |
| 0089 55 | 1 | KEGELRAD | 4931436406 | 4002395250943 |
| 0091 56 | 2 | LAGER | 680727001 | 4002395772087 |
| 0092 57 | 2 | SCHEIBE | 4931436407 | 4002395250950 |
| 0093 58 | 1 | NADELLAGER | 4931436408 | 4002395250967 |
| 0101 59 | 1 | KUPPLUNG | 4931436409 | 4002395250974 |
| 0102 60 | 1 | STEMPEL | 4931436410 | 4002395250981 |
| 0103 61 | 1 | GABEL | 4931436411 | 4002395250998 |
| 0105 62 | 1 | VERBINDUNGSTEIL | 4931436412 | 4002395251605 |
| 0106 63 | 1 | O-RING | 4931436413 | 4002395251612 |
| 0107 64 | 1 | Dichtung, FKM f. Getriebe im Bohrhammer | 4931448574 | 4002395179534 |
| 0108 65 | 1 | GETRIEBEBEDECKEL | Item discontinued(4931452225) | |
| 0111 66 | 1 | KNOPF | 4931436416 | 4002395251643 |
| 0112 67 | 1 | GUMMIKAPPE | 4931436417 | 4002395251650 |
| 0113 68 | 2 | SCHEIBE | 4931436418 | 4002395251667 |
| 0114 69 | 1 | FUEHRUNGSHUELSE | Item discontinued(4931436419) | |
| 0115 70 | 1 | FEDER | 4931436420 | 4002395251681 |
| 0116 71 | 4 | DAEMPFER | Item discontinued(4931436421) | |
| 0117 72 | 1 | HALTER | 4931436422 | 4002395248902 |
| 0118 73 | 1 | GEHAEUSE | 4931436423 | 4002395248919 |
| 0119 74 | 2 | SCHRAUBE | 4931436424 | 4002395248926 |
| 0120 75 | 1 | DRUECKER | 4931436425 | 4002395248933 |
| 0121 76 | 1 | SCHALTELEKTRONIK | 4931448377 | 4002395248889 |
| 0122 77 | 1 | HANDGRIFF KOMPL. | 4931436427 | 4002395248957 |
| 0124 78 | 1 | KONDENSATOR | 4931436428 | 4002395248964 |
| 0125 79 | 2 | STEMPELFUEHRUNG | 632823001 | 4002395855155 |
| 0126 80 | 4 | SCHRAUBE | 661189001 | 4002395855148 |
| 0127 81 | 1 | ANSCHLUSSLEITUNG | Item discontinued(4931436430) | |
| 0128 82 | 1 | LEITUNG | 4931448378 | 4002395248872 |
| 0129 83 | 1 | LEITUNG | 4931448379 | 4002395248865 |
| 0130 84 | 2 | SCHAUMSTOFF | 4931436434 | 4002395249671 |
| 0131 85 | 1 | FEDER | 4931436435 | 4002395249688 |
| 0132 86 | 1 | ROHR | 4931436436 | 4002395249695 |
| 0133 87 | 1 | GUMMIPUFFER | 4931436437 | 4002395250301 |
| 0134 88 | 1 | LEISTUNGSSCHILD | 4931452102 | 4002395179893 |
| 0135 89 | 1 | Nylon-Schnur | 4931436441 | 4002395250318 |
| 0136 90 | 2 | HUELSE | 4931436442 | 4002395250325 |
| 0137 91 | 4 | SICHERUNGSRING | 680866003 | 4002395823895 |
| 0138 92 | 2 | O-RING | 4931436443 | 4002395250332 |
| 0139 93 | 6 | SCHRAUBE | 4931436444 | 4002395250349 |
| 0140 94 | 1 | SCHRAUBE | 660031017 | 4002395825189 |
| 0145 95 | 1 | BOHRFUTTERADAPTER | 621194001 | 4002395854127 |
| 0146 96 | 1 | FEDER | 692738001 | 4002395854196 |
| 0147 97 | 1 | SCHNELLSPANNBOHRFUTTER 1.5-13MM 1/2X2 | 4932376531 | 4002395346332 |
| 0148 98 | 1 | HALTEPLATTE | Item discontinued(4931447719) | |
| 0149 99 | 1 | ISOLIER SCHLAUCH | Item discontinued(4931448845) | |
| 0700 100 | 1 | 4RANSPORTKOFFER | 4931436445 | 4002395249633 |

| Position | Quantity | Description | Part number | EAN |
|----------|----------|--------------|-------------|---------------|
| 1000 101 | 1 | GETRIEBEFETT | 4931443288 | 4002395255627 |